

HPE-810

Part List (v1.0)

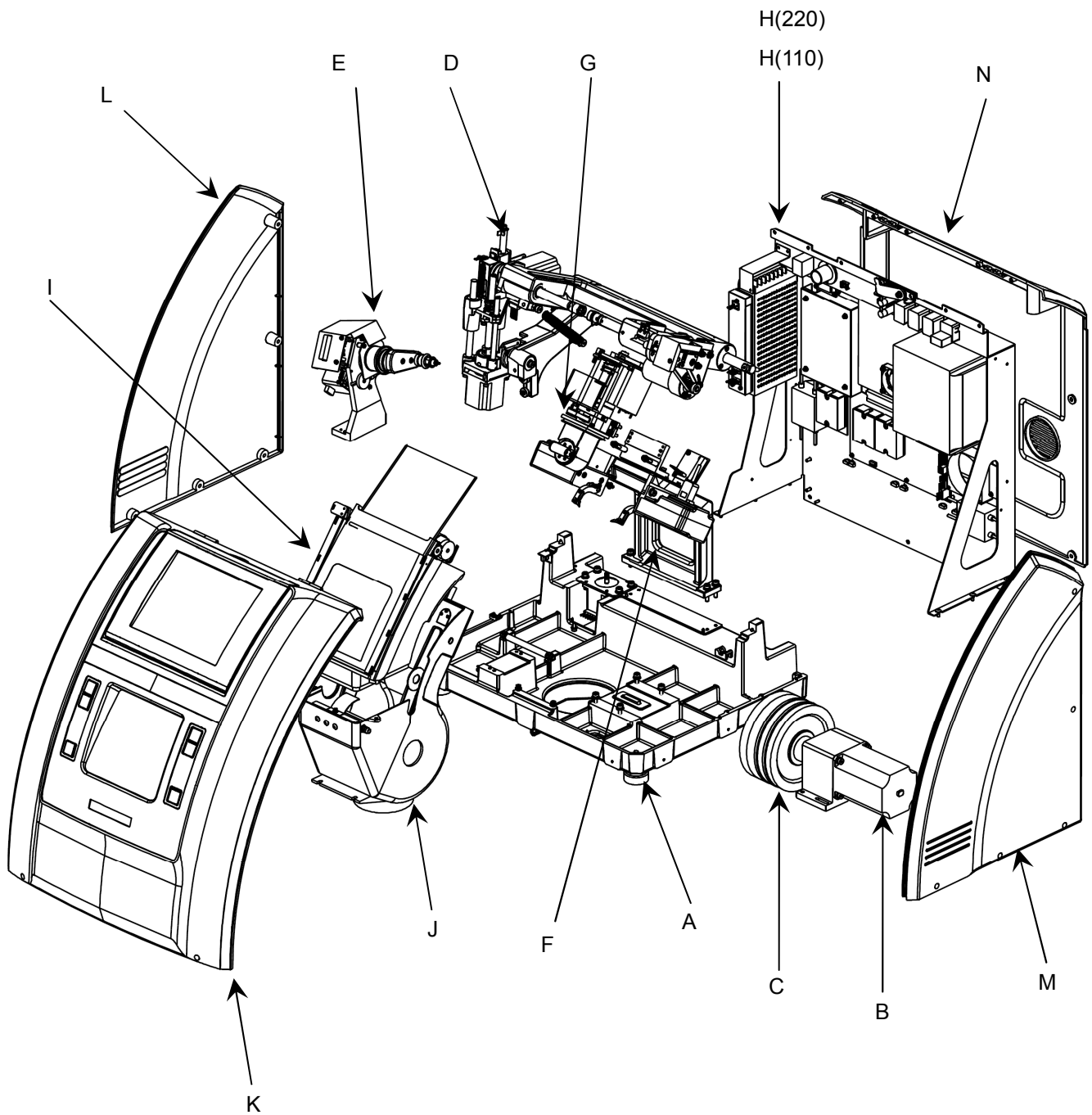
(Confidential, Only for the agency of Huvitz)



Table of Contents

I.	EXPLODED VIEW WITH PARTS LIST	4
	HPE-810	4
1.1	G4 HPE-810 TOTAL ASSY	4
1.2	G4 BASE ASSY	6
1.3	G2 WHEEL MOTOR ASSY	8
1.4	G2 WHEEL ASSY (2)	10
1.5	G4 CARRIAGE TOTAL ASSY	12
1.6	G4 GROOVING TOTAL ASSY	28
1.7	G4 FEELER ASSY	34
1.8	G4 DRILL ASSY	46
1.9	G4 EL BACK BRK 220V ASSY	60
1.10	G4 EL BACK BRK 110V ASSY	66
1.11	G4 EDGING ROOM TOP ASSY	68
1.12	G4 EDGING ROOM BTM ASSY	70
1.13	G4 COVER FRONT ASSY	72

✓ **Version Information**
V1.0 (Release Date: 14/Sep/15)

[G4 HPE-810 TOTAL ASSY]

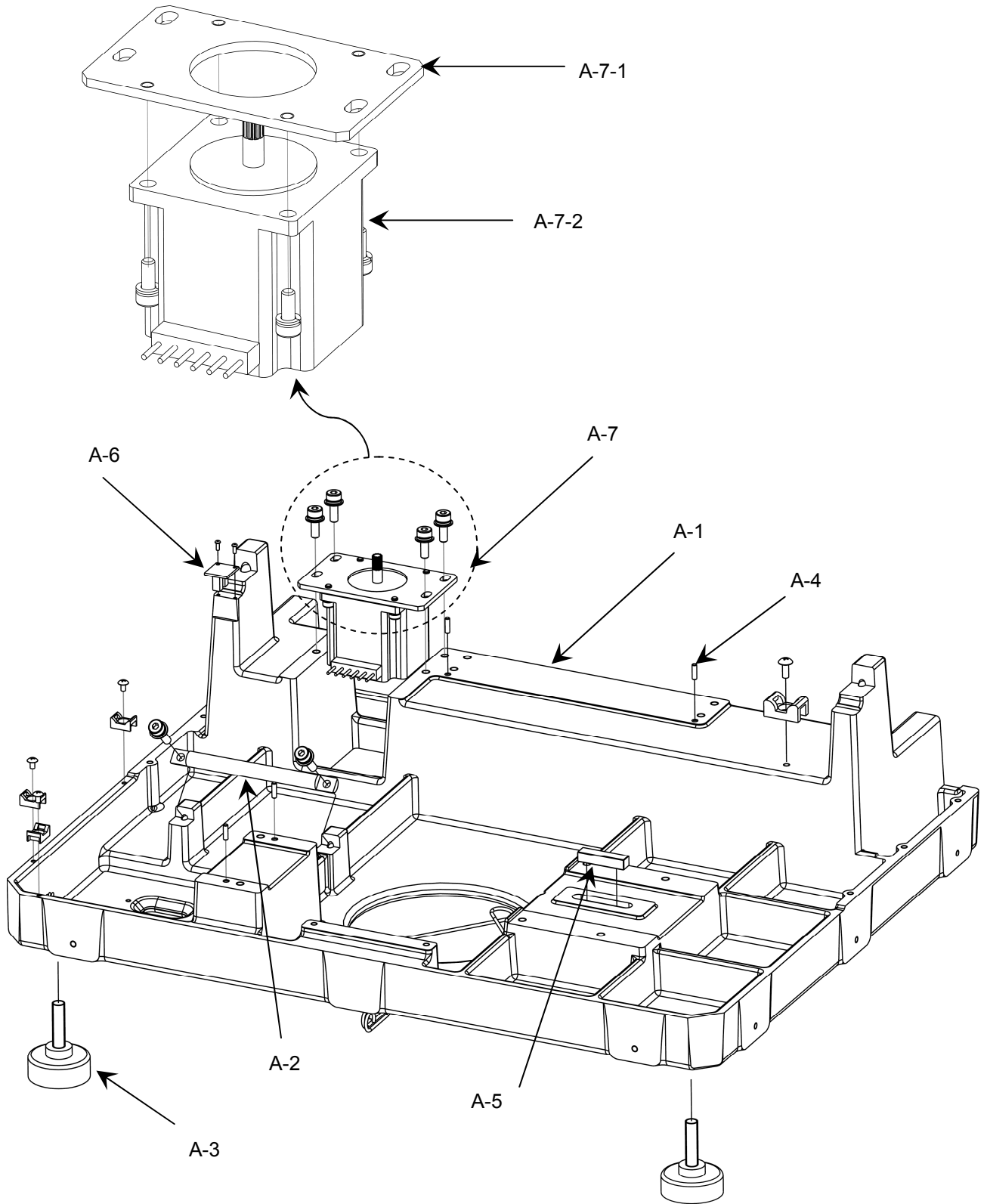
I. EXPLODED VIEW WITH PARTS LIST

HPE-810

1.1 G4 HPE-810 TOTAL ASSY

No.	Part Name	Code	Description	Qty
A	G4 BASE ASSY	G4MASSY001-AA		1
B	G2 WHEEL MOTOR ASSY - 220V	G2MASSY700-AB		1
C	G2 WHEEL ASSY (2)	G2MASSY720-AA		1
D	G4 CARRIAGE TOTAL ASSY	G4MASSY008-AA		1
E	G4 GROOVING TOTAL ASSY	G4MASSY026-AA		1
F	G4 FEELER ASSY	G4MASSY023-AA		1
G	G4 DRILL ASSY	G4MASSY013-AA		1
H	H(220)	G4 EL BACK BRK 220V ASSY	G4MASSY003-AB	1
	H(110)	G4 EL BACK BRK 110V ASSY	G4MASSY025-AB	1
I	G4 EDGING ROOM TOP ASSY	G4MASSY027-AB		1
J	G4 EDGING ROOM BTM ASSY	G4MASSY045-AA		1
K	G4 COVER FRONT ASSY	G4MASSY020-AA		1
L	G2 COVER LEFT	2000A00G205-A		1
M	G2 COVER RIGHT	2000A00G206-A		1
N	G4 COVER BACK	2000A001215-A		1

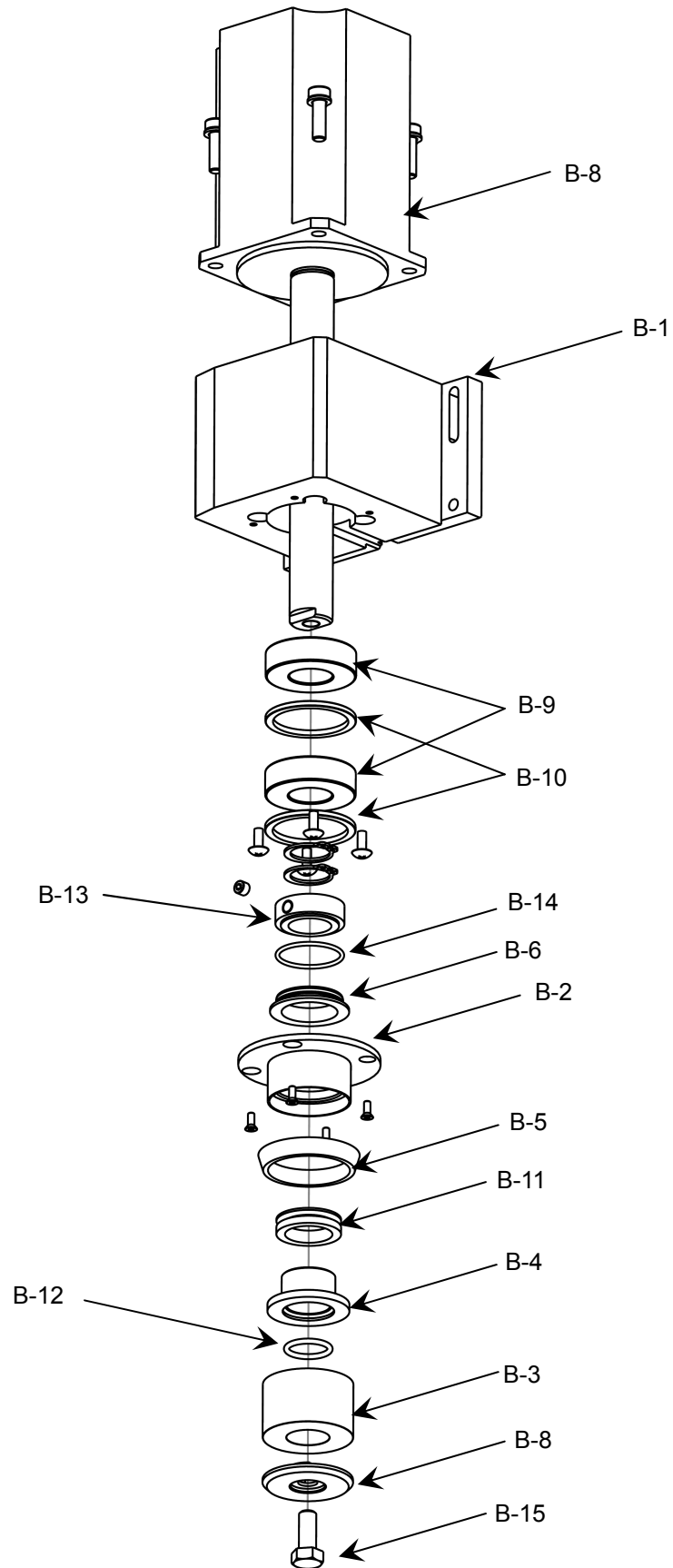
[G4 BASE ASSY]



1.2 G4 BASE ASSY

No.	Part Name	Code	Description	Qty
A	G4 BASE ASSY	G4MASSY001-AA		
A-1	G4 BASE PLATE	1200MP01314-A		1
A-2	G2 X SHAFT	1240MP0G201-A		1
A-3	FOOT	3000A000011-A		3
A-4	DWEL PIN (ø3-10L)	3022A00L002-A		4
A-5	PARALLEL KEY (8-40)	3099A000002-B		1
A-6	PCB ASSY (GP1S54V)	G3EPCB3002-AB		1
A-7	G4 X MOVING MOTOR ASSY	G4MASSY002-AA		1

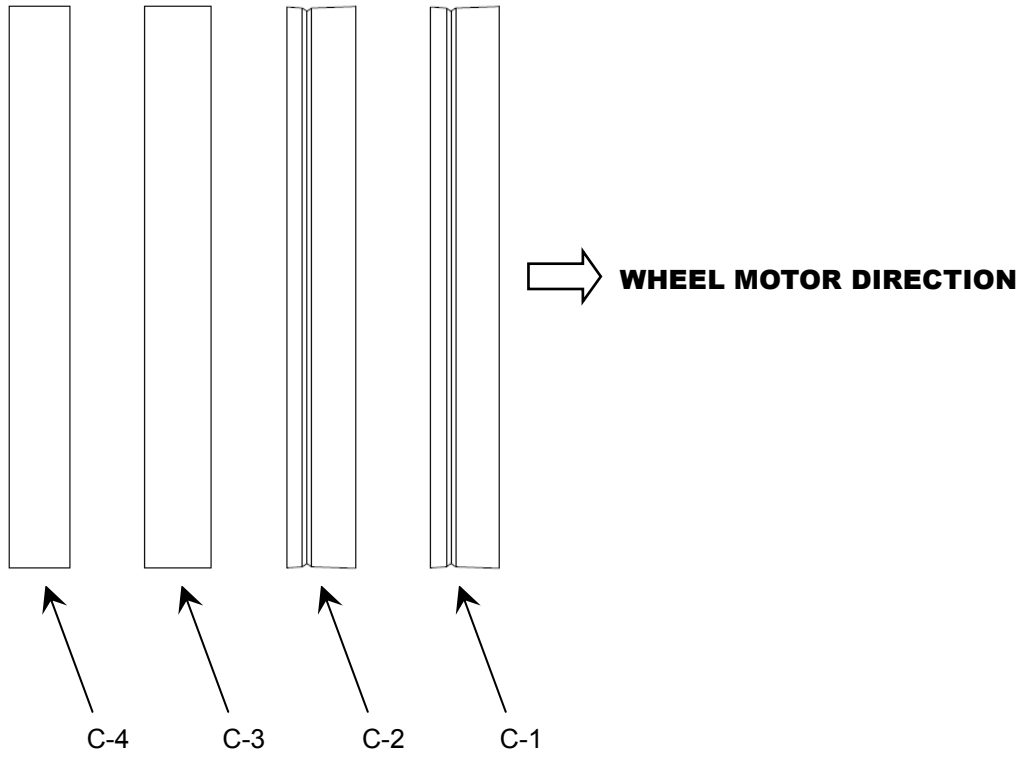
No.	Part Name	Code	Description	Qty
A-7	G4 X MOVING MOTOR ASSY	G4MASSY002-AA		
A-7-1	G2 X MOVING MOTOR BRK	1330MP0G207-B		1
A-7-2	HYBRID STEPPING MOTOR	6430TMT23HS-A		1

[G2 WHEEL MOTOR ASSY]

1.3 G2 WHEEL MOTOR ASSY

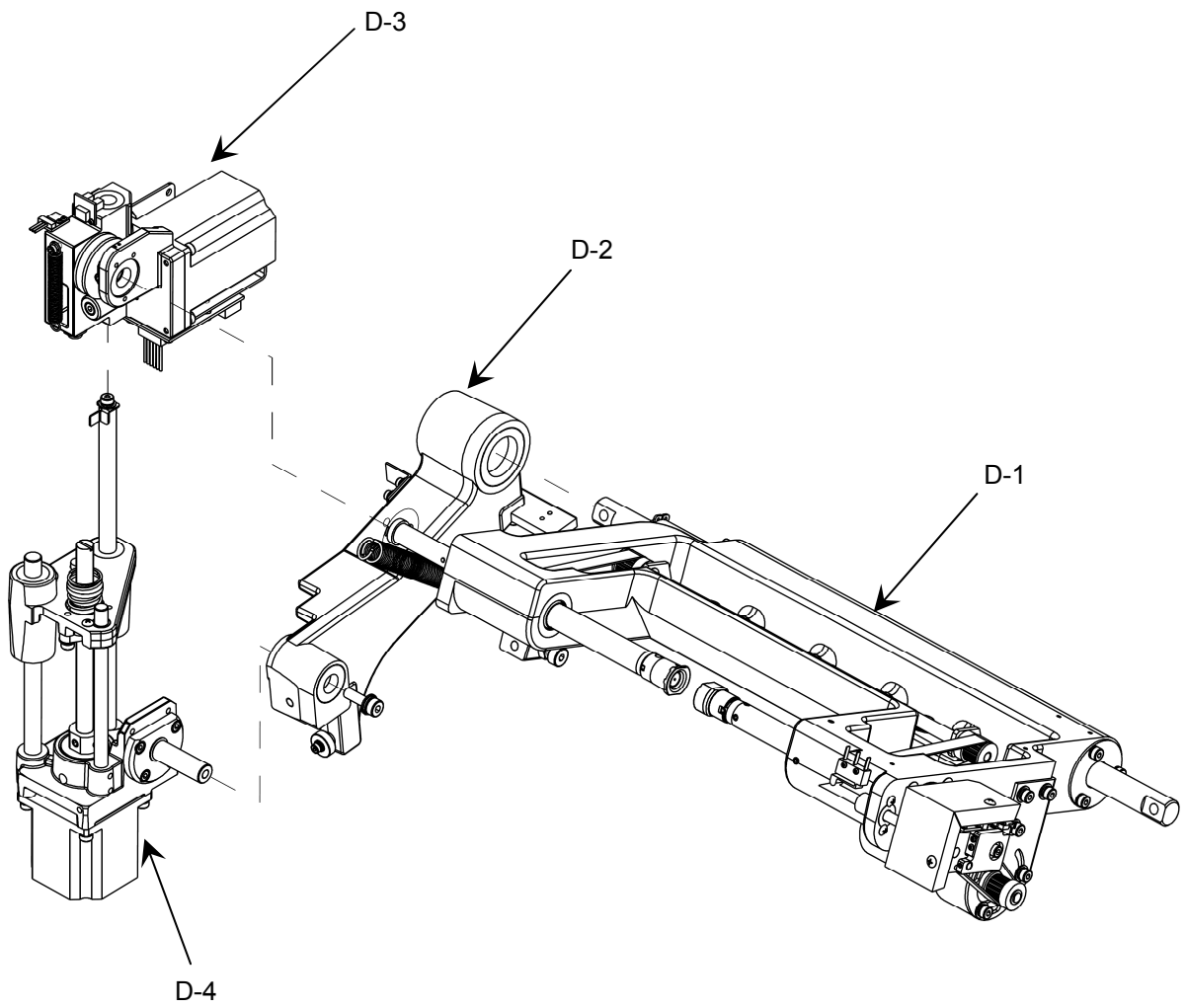
No.	Part Name	Code	Description	Qty
B	G2 WHEEL MOTOR ASSY	G2MASSY700-AB		
B-1	G2 WHEEL MOTOR FRAME	1250MP0G205-C		1
B-2	G2 WHEEL SHAFT COVER	1200MP0G221-C		1
B-3	G2 SHAFT WATER COVER	1200MP0G228-A		1
B-4	G2 SHAFT WATER COVER SPACER	1210A00G216-C		1
B-5	G2 WHEEL SHAFT COVER SEALING	2040A00G202-B		1
B-6	G2 WHEEL SHAFT SEALING RING	1210A000721-A		1
B-7	G2 WHEEL LOCK PLATE	1210A00G217-A		1
B-8	WHEEL MOTOR (220V)	6430TMT08B0-B		1
B-9	BEARING (6004-2RSH)	3002A000261-A		2
B-10	G2 WHEEL BEARING SPACER	1200A000257-A		2
B-11	V-RING (VA0025)	3004A000026-A		2
B-12	O-RING (25.4 x 34.9 x 4.8)	3004A000001-A		1
B-13	SET COLLAR(MISUMI PSCCN20-10)	3099A000043-A		1
B-14	O-RING(AN024)	3004A000242-A		1
B-15	HEAXAGONBOLT-M8L20	1530MSU0309-A		1

[G2 WHEEL ASSY (2)]



1.4 G2 WHEEL ASSY (2)

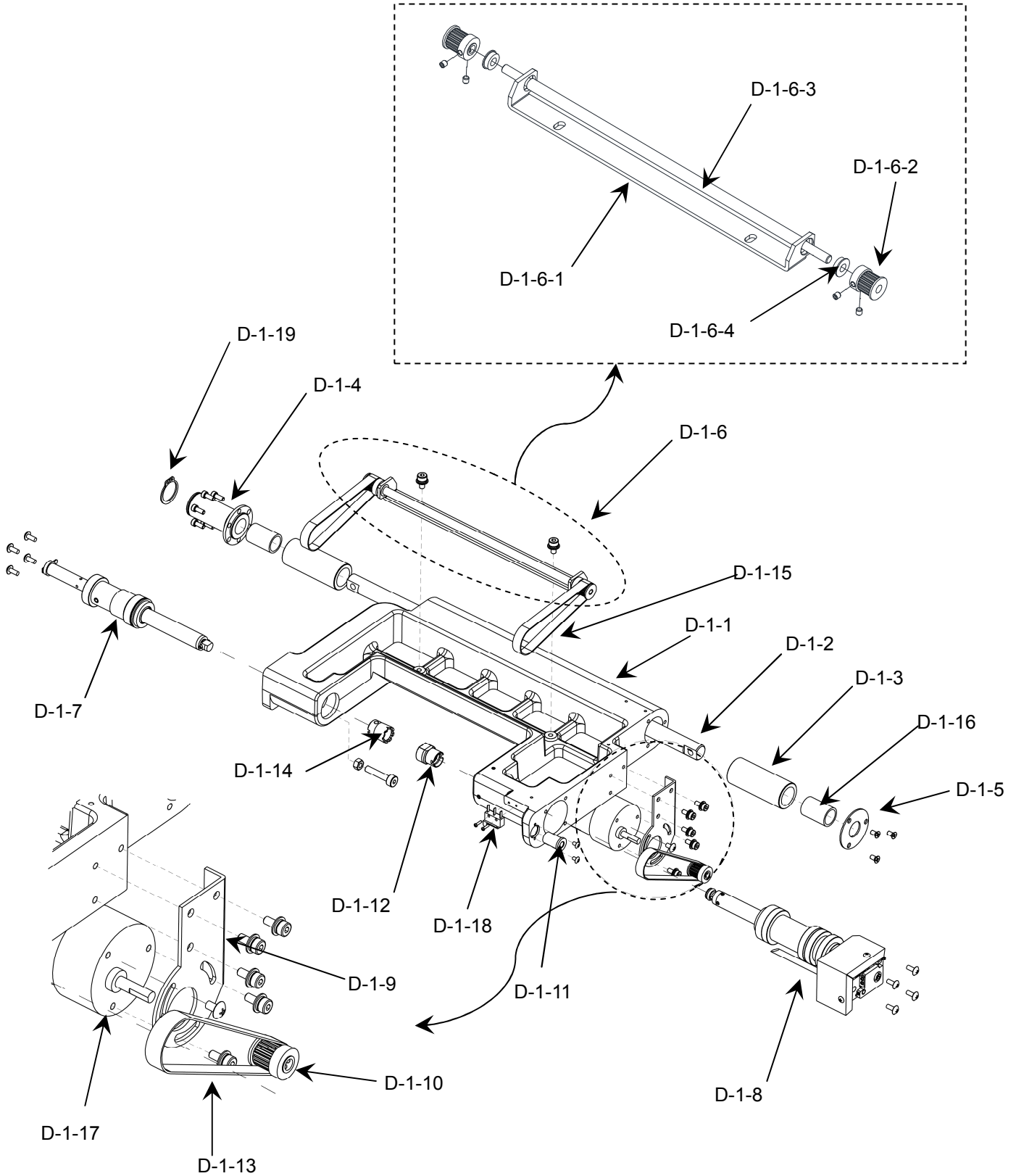
No.	Part Name	Code	Description	Qty
C	G2 WHEEL ASSY (2)	G2MASSY720-AA		
C-1	G2 WHEEL POLISHING (2)	G2MASSY700-D		1
C-2	G2 WHEEL FINISHING (2)	1250MZ0G208-C		1
C-3	G2 WHEEL ROUGHING PLASTIC (2)	1250MZ0G210-B		1
C-4	G2 WHEEL ROUGHING GLASS (2)	1250MZ0G209-B		1

[G4 CARRIAGE TOTAL ASSY]

1.5 G4 CARRIAGE TOTAL ASSY

No.	Part Name	Code	Description	Qty
D	G4 CARRIAGE TOTAL ASSY	G4MASSY008-AA		
D-1	G4 CARRIAGE ASSY	G4MASSY034-AD		1
D-2	G2 TILT BASE ASSY	G2MASSY210-AA		1
D-3	G4 ROTATION MOTOR ASSY	G4MASSY009-AA		1
D-4	G4 LIFT MOTOR ASSY	G4MASSY041-AA		1

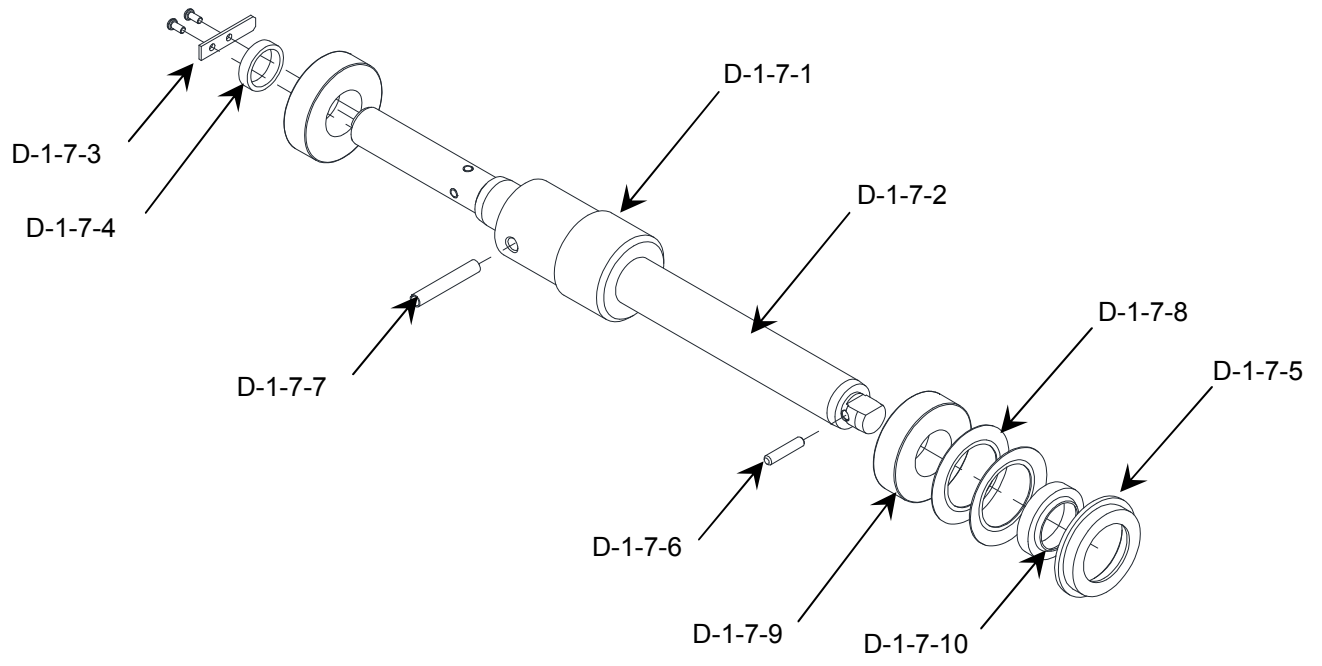
[G4 CARRIAGE ASSY]



1.5. G4 CARRIAGE TOTAL ASSY (continue)

No.	Part Name	Code	Description	Qty
D-1	G4 CARRIAGE ASSY	G4MASSY034-AC		
D-1-1	G2 CARRIAGE	1250MP0G203-E		1
D-1-2	G2 CARRIAGE SHAFT	1240MP0G202-A		1
D-1-3	CARRIAGE BUSHING	1240MP0G003-B		2
D-1-4	CARRIAGE EXTENSION BAR	1210A00G005-C		1
D-1-5	CARRIAGE BALLCAGE STOPPER	1000A00G007-A		1
D-1-6	ROTATION CONNECT ASSY	G0MASSY213-AA		1
D-1-7	G2 ROTATION LEFT ASSY	G2MASSY221-AA		1
D-1-8	G4 CHUCK ASSY	G4MASSY036-AB		1
D-1-9	G2 CHUCK MOTOR BRACKET	1310A00G203-B		1
D-1-10	ROTATION CONNECT PULLEY 3M16	1220A00G004-C		1
D-1-11	CHUCK GUIDE HOUSING	1220A00G023-B		1
D-1-12	G4 CLAMP RUBBER ASSY	G4MASSY035-AB		1
D-1-13	BELT (S3M-252-10W)	3006A000257-A		1
D-1-14	SMALL BLOCK ADAPTER ASSY	G0MASSY815-AD		1
D-1-15	BELT (S3M-255-10W)	3006A000002-A		2
D-1-16	BALL RETAINER (MBSH16-30)	3010A000005-A		2
D-1-17	HARNESS(CLAMP EXT TO CLAMP MOTOR)	G2EHARS019-AA		1
D-1-18	HARNESS(EBB(J21) TO CLAMP SW)	G4EHARS002-AA		1
D-1-19	C-RING (#23)			1

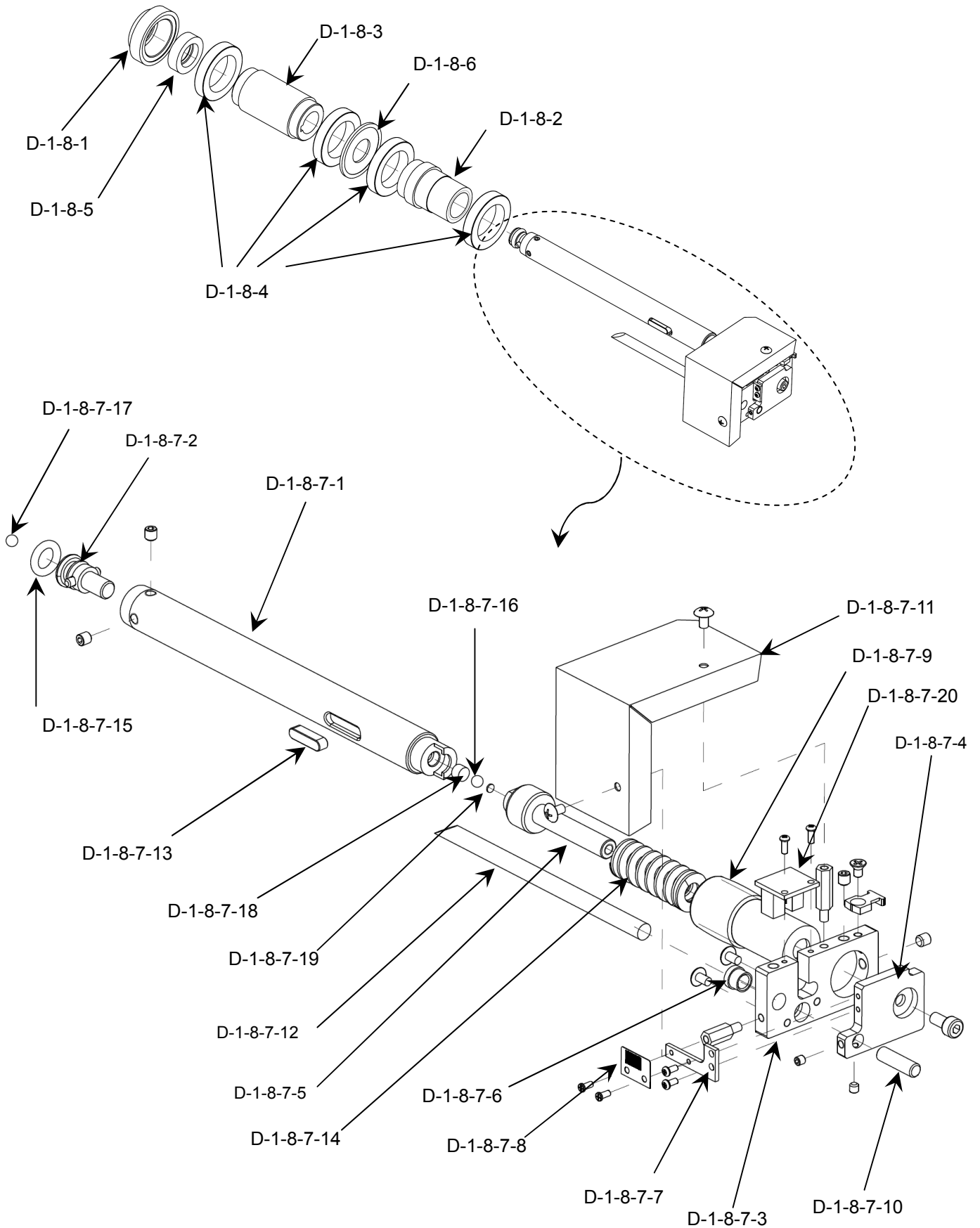
No.	Part Name	Code	Description	Qty
D-1-6	ROTATION CONNECT ASSY	G0MASSY213-AA		-
D-1-6-1	ROTATION CONNECT FRAME	1310A00G011-B		1
D-1-6-2	ROTATION CONNECT PULLEY 3M16	1220A00G004-C		2
D-1-6-3	ROTATION SHAFT	1210A00G012-A		1
D-1-6-4	BEARING (MF126ZZ)	3002A000009-A		2

[G4 CARRIAGE ASSY] – Continue

1.5. G4 CARRIAGE TOTAL ASSY (Continue)

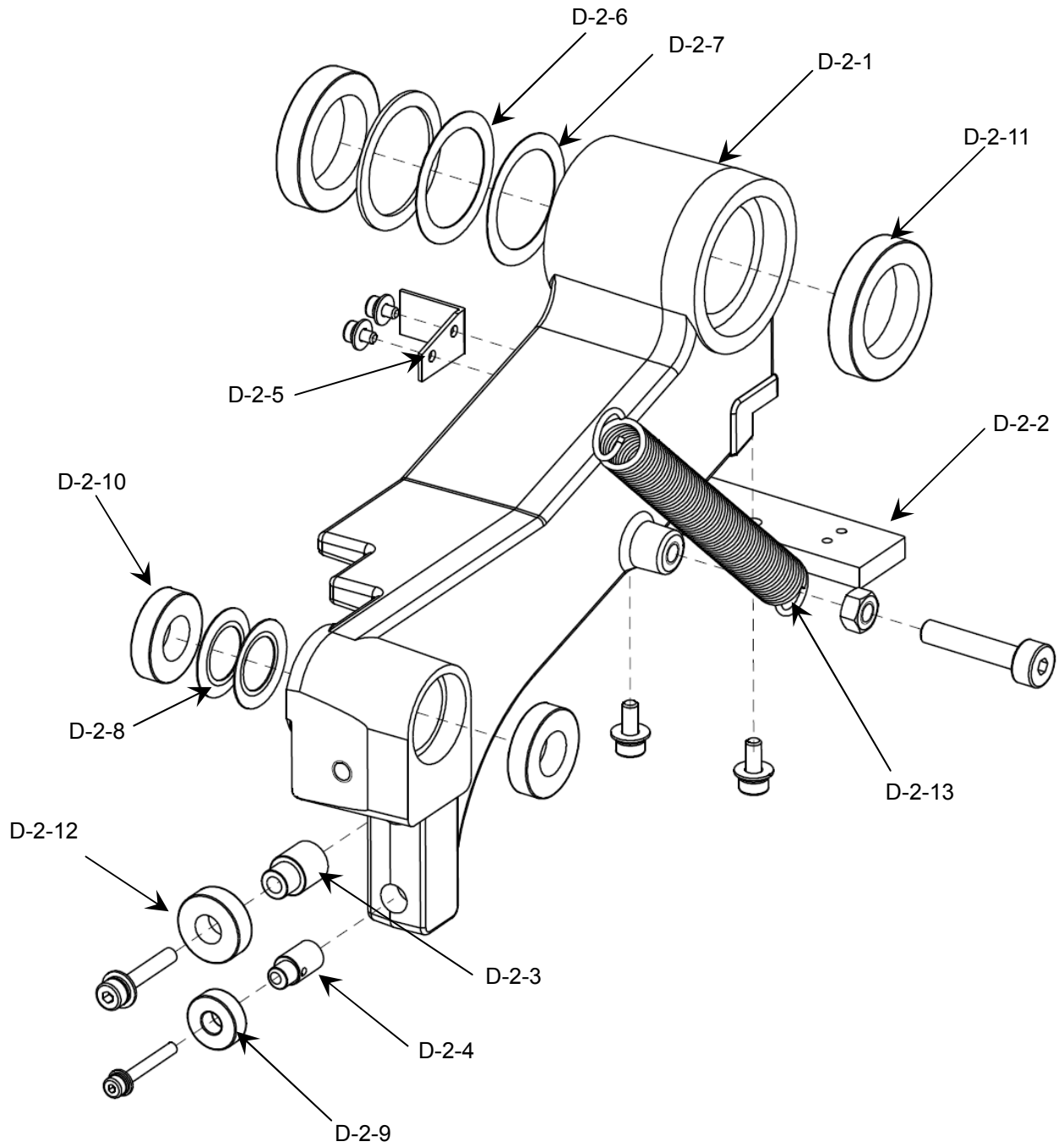
No.	Part Name	Code	Description	Qty
D-1-7	G2 ROTATION LEFT ASSY	G2MASSY221-AA		-
D-1-7-1	G2 ROTATION LEFT PULLEY	1220A00G201-B		1
D-1-7-2	G2 ROTATION LEFT SHAFT	1210A00G201-B		1
D-1-7-3	G2 ROTATION SENSOR DOG	1310A00G202-B		1
D-1-7-4	G2 ROTATION SENSOR DOG SPACER	1200MP0G201-A		1
D-1-7-5	ROTATION LEFT WATER COVER	1210A00G011-A		1
D-1-7-6	PIN (Ø3-14.5)	1210A00G053-C		1
D-1-7-7	SPRING PIN (Ø4-25)	1562A000425-A		1
D-1-7-8	DISK SPRING (31.7 x 20.4 x 0.4)	1557A000317-A		2
D-1-7-9	BEARING (6002ZZ)	3002A000007-A		2
D-1-7-10	DUST SEAL (DSI-15-23-4.5-6 _ color; yellow)	3004A000003-A		1

[G4 CARRIAGE ASSY] – Continue



No.	Part Name	Code	Description	Qty
D-1-8	G4 CHUCK ASSY	G4MASSY036-AB		-
D-1-8-1	G2 CHUCK LEFT COVER	1210A00G202-A		1
D-1-8-2	G4 CHUCK MOVING PULLEY 3M 26	1230A000283-A		1
D-1-8-3	ROTATION RIGHT PULLEY 3M 30	1220A00G002-C		1
D-1-8-4	BEARING (6805ZZ)	3002A000011-A		4
D-1-8-5	OILSEAL (TC15-15*25*7)	3004A000004-A		1
D-1-8-6	G2 CLAMP BEARING SPACER	1200A000258-A		1

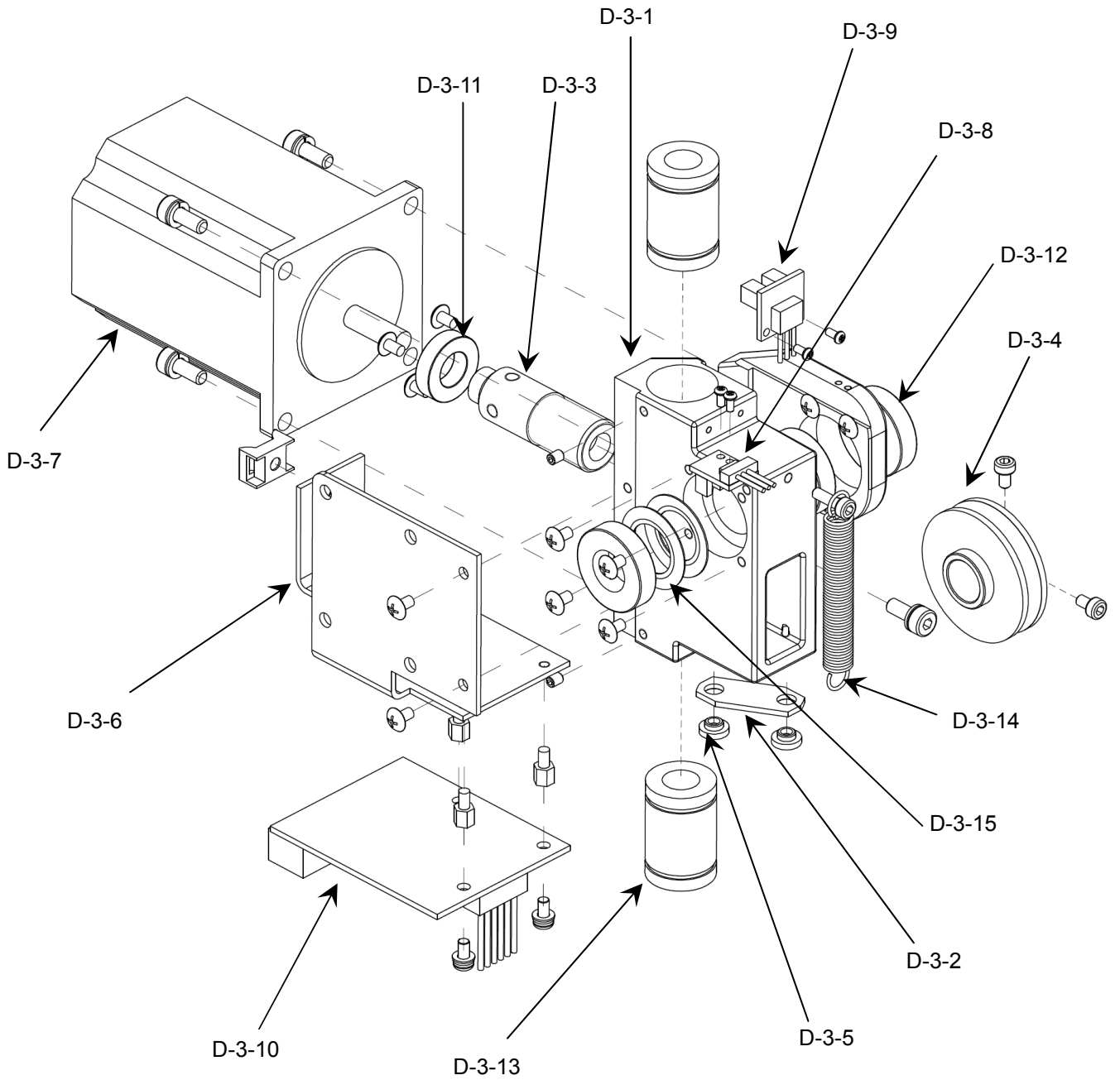
No.	Part Name	Code	Description	Qty
D-1-8-7	G4 CHUCK SHAFT ASSY	G4MASSY039-AC		-
D-1-8-7-1	G4 CHUCK SHAFT	1210A000745-B		1
D-1-8-7-2	G4 CHUCK SHAFT HEAD	1210A000800-A		1
D-1-8-7-3	G4 CHUCK SCREW PLATE	1200A000273-A		1
D-1-8-7-4	G4 CLAMP PISTON PLATE	1200A000274-A		1
D-1-8-7-5	G4 CLAMP PISTON	1220A004039-A		1
D-1-8-7-6	G4 CLAMP PISTON BUSH	1220A004040-A		1
D-1-8-7-7	G4 CLAMP SLIT BRK	1330MS00153-A		1
D-1-8-7-8	G4 CLAMP PI DOG	1310A000148-A		1
D-1-8-7-9	G4 CHUCK MOVING SCREW	1210A000744-A		1
D-1-8-7-10	G4 CLAMP GUIDE SHAFT	1210A000746-A		1
D-1-8-7-11	G4 CLAMP PI COVER	1340A000007-B		1
D-1-8-7-12	CHUCK GUIDE SHAFT	1210A00G009-A		1
D-1-8-7-13	KEY 4x4x16	1210A00G056-A		1
D-1-8-7-14	SPRING(SWG14-35)	3008A000262-A		1
D-1-8-7-15	O-RING(AN109)	3004A000244-A		1
D-1-8-7-16	T.C BALL(4mm)	3002A000273-A		1
D-1-8-7-17	BEARING BALL-D4	3002A00S002-A		1
D-1-8-7-18	CHUCK SHAFT PIVOT	1240MP0G004-A		1
D-1-8-7-19	SET PIECE (SEPNS4)	3099A000064-A		1
D-1-8-7-20	G4 PCB ASSY(EESJ3D)	G4EPCB0012-AA		1

[G2 TILT BASE ASSY]

1.5. G4 CARRIAGE TORAL ASSY (Continue)

No.	Part Name	Code	Description	Qty
D-2	G2 TILT BASE ASSY	G2MASSY210-AA		-
D-2-1	G2 TILT BASE	1250MP0G202-A		1
D-2-2	X MOVING RACK	1210A00G004-D		1
D-2-3	X BEARING SHAFT UP	1210A00G064-A		1
D-2-4	X BEARING SHAFT DOWN	1220A00G020-A		1
D-2-5	G2 X PI DOG	1310A00G201-B		1
D-2-6	WAVEWASHER 35 SPACER	1000A00G009-A		1
D-2-7	WAVE WASHER (35 / WW6202K)	1556A000035-A		1
D-2-8	DISK SPRING (23.7 x 14.3 X 0.4t)	1557A000237-A		2
D-2-9	BEARING (696ZZ)	3002A000005-A		1
D-2-10	BEARING (6805ZZ)	3002A000011-A		2
D-2-11	BEARING (6901ZZ)	3002A000012-A		2
D-2-12	BEARING (698ZZ)	3002A000019-A		1
D-2-13	SPRING (AWU14-125)	3008A000026-A		1

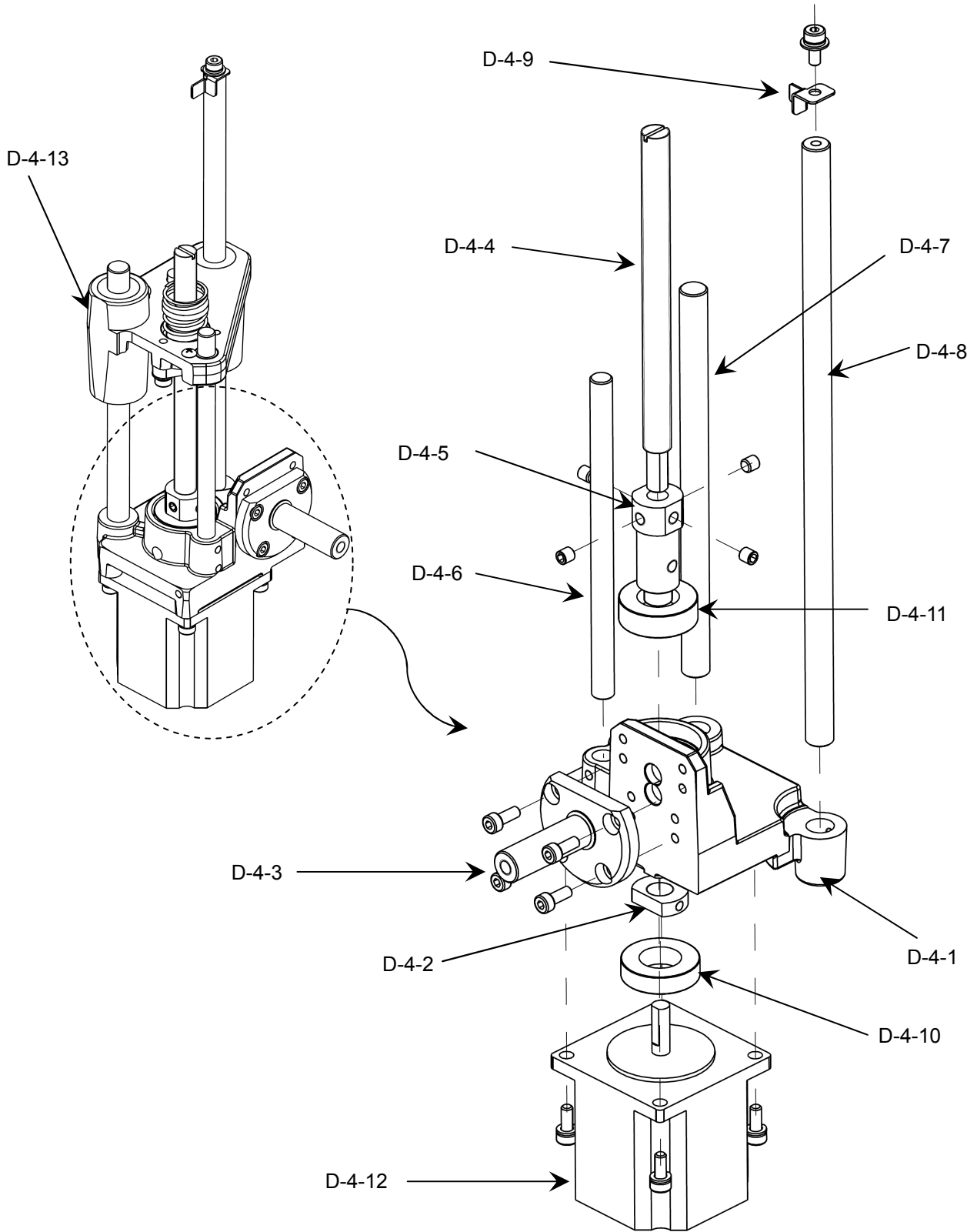
[G4 ROTATION MOTOR ASSY]



1.5. G4 CARRIAGE TOTAL ASSY (Continue)

No.	Part Name	Code	Description	Qty
D-3	G4 ROTATION MOTOR ASSY	G4MASSY009-AA		-
D-3-1	G2 ROTATION MOTOR PLATE	1200MP0G202-C		1
D-3-2	LIFT POINT OF CONTACT 2	1210A00G021-C		1
D-3-3	G2 RATATION WORM	1210A00G204-C		1
D-3-4	G4 ROTATION WORM WHEEL	1220A004071-A		1
D-3-5	CONTACT BOLT SPACER(M)	2020A00G004-A		2
D-3-6	G4 ROTATION BOARD BRK	1330MP00003-A		1
D-3-7	STEP MOTOR	640100A0002-A		1
D-3-8	PCB ASSY(SG233V-BLACK)	G3EPCB3003-AA		1
D-3-9	PCB ASSY(GP1S54H-BLACK)	G3EPCB3001-AA		1
D-3-10	G4 PCB ASSY(ERY-400)	G4EPCB0006-AA		1
D-3-11	BEARING (6800ZZ)	3002A000010-A		1
D-3-12	BEARING (6901ZZ)	3002A000012-A		3
D-3-13	BALLBUSH (LMU10)	3010A000014-A		2
D-3-14	SPRING (AWU8-60)	3008A000030-A		1
D-3-15	DISK SPRING (23.7 x 14.3 x 0.4)	1557A000237-A		2

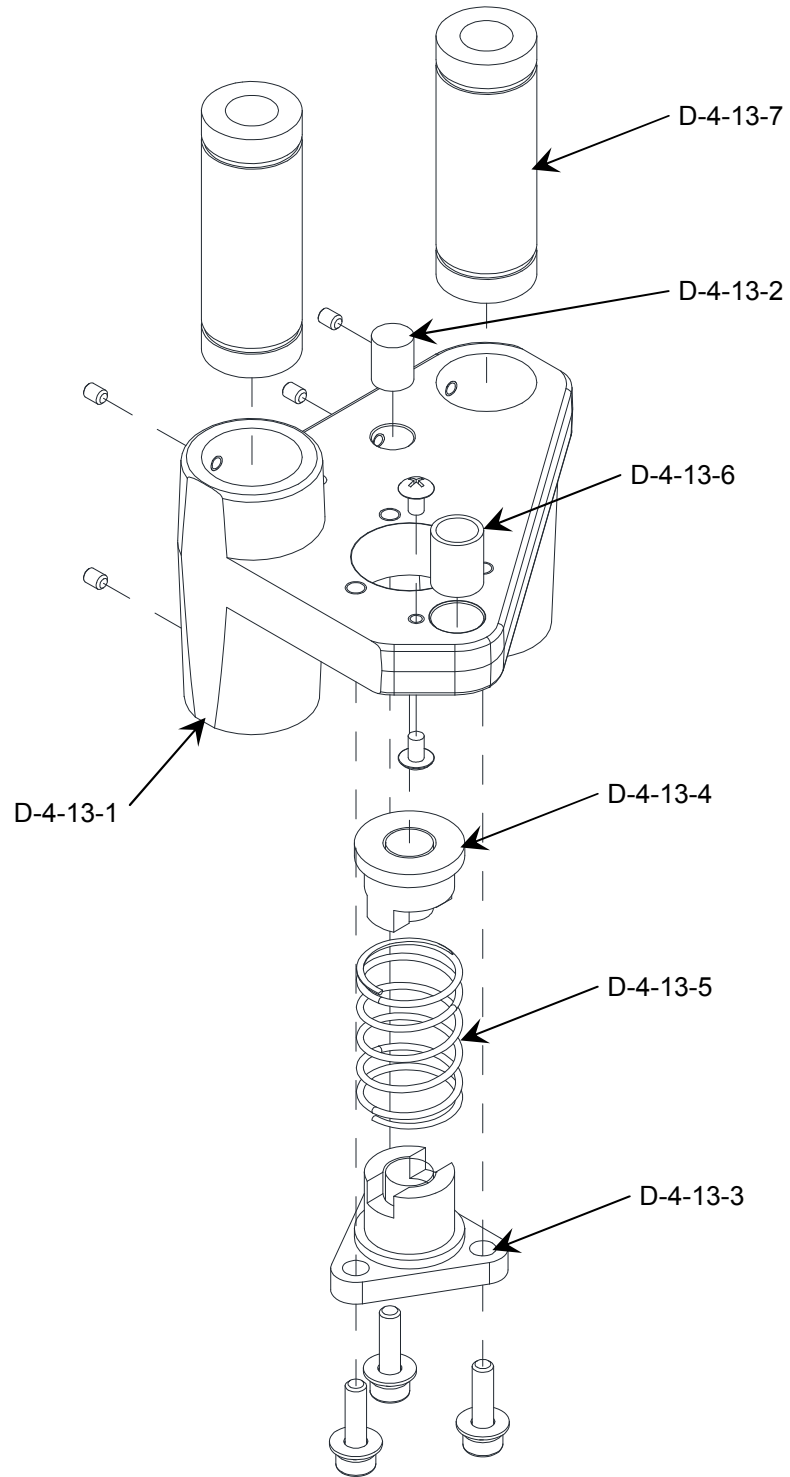
[G4 LIFT MOTOR ASSY]



1.5. G4 CARRIAGE TOTAL ASSY (Continue)

No.	Part Name	Code	Description	Qty
D-4	G4 LIFT MOTOR ASSY	G4MASSY041-AA		-
D-4-1	G2 LIFT MOTOR BASE	1200MP0G203-C		1
D-4-2	LIFT TM SCREW LOCKNUT	1210A00G016-A		1
D-4-3	LIFT ROTATION SHAFT	1210A00G020-C		1
D-4-4	G3 LEADSCREW	1210A00G301-C		1
D-4-5	G3 LIFT SCREW CONNECTOR	1210A00G307-A		1
D-4-6	G2 LIFT GUIDE ROD 8	1240MP0G203-A		1
D-4-7	G2 LIFT GUIDE ROD 10 S	1240MP0G204-A		1
D-4-8	G2 LIFT GUIDE ROD 10 L	1240MP0G301-A		1
D-4-9	LIFT GUIDE SENSOR DOG	1000A00G010-A		1
D-4-10	BEARING (6902ZZ)	3002A000013-A		1
D-4-11	THRUST BEARING (51102)	3002A000014-A		1
D-4-12	HARNESS(ERY(J3) TO Y AXIS STEP)	G4EHARS003-AA		1
D-4-13	G2 LIFT NUT ASSY	G2MASSY250-AA		1

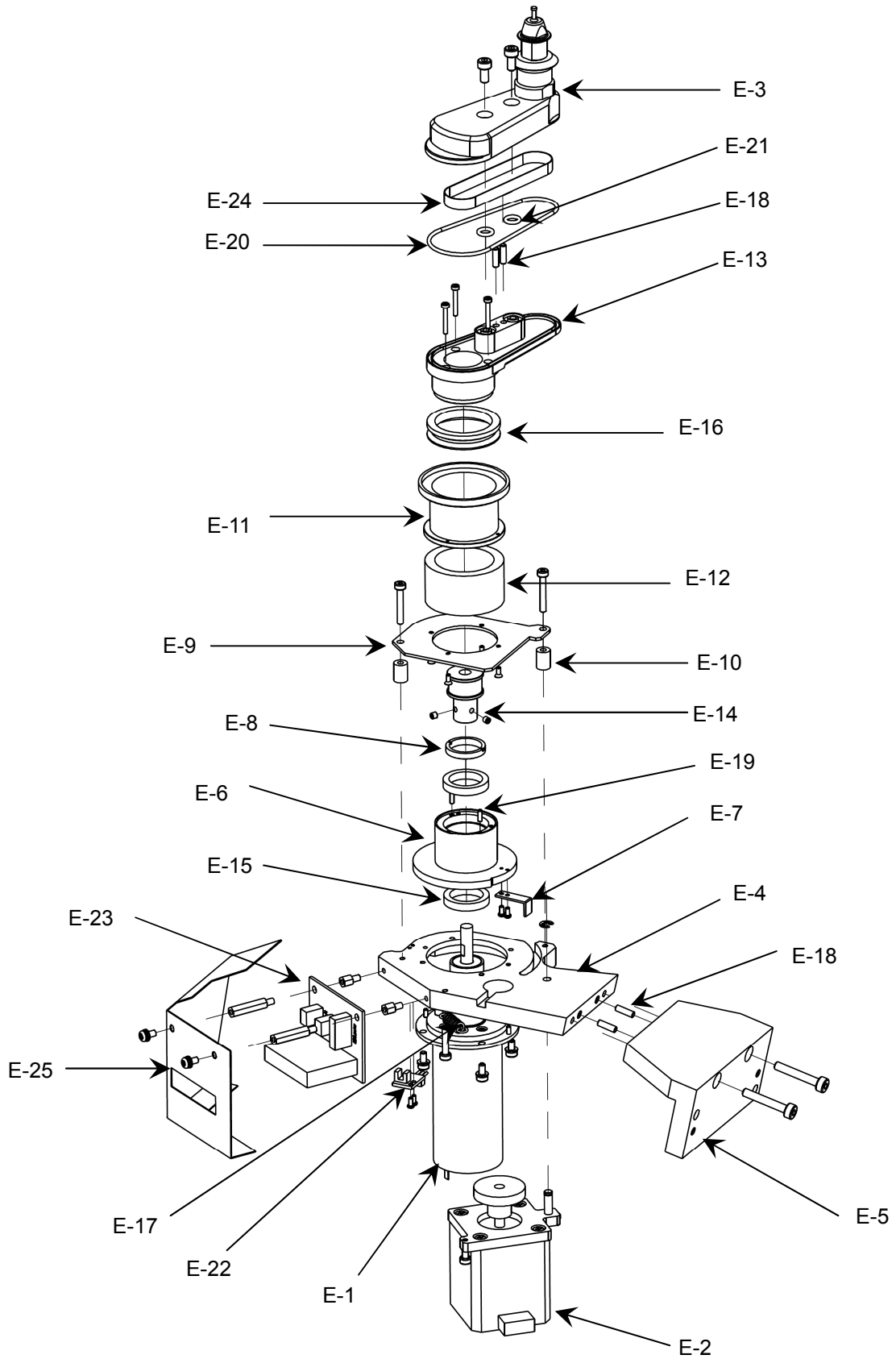
[G2 LIFT NUT ASSY]



1.5. G4 CARRIAGE TORAL ASSY (Continue)

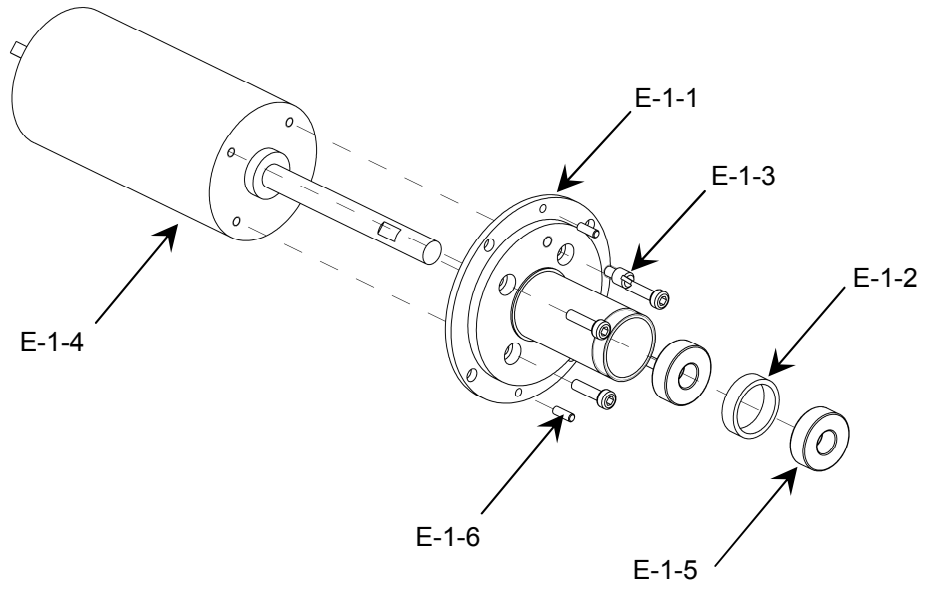
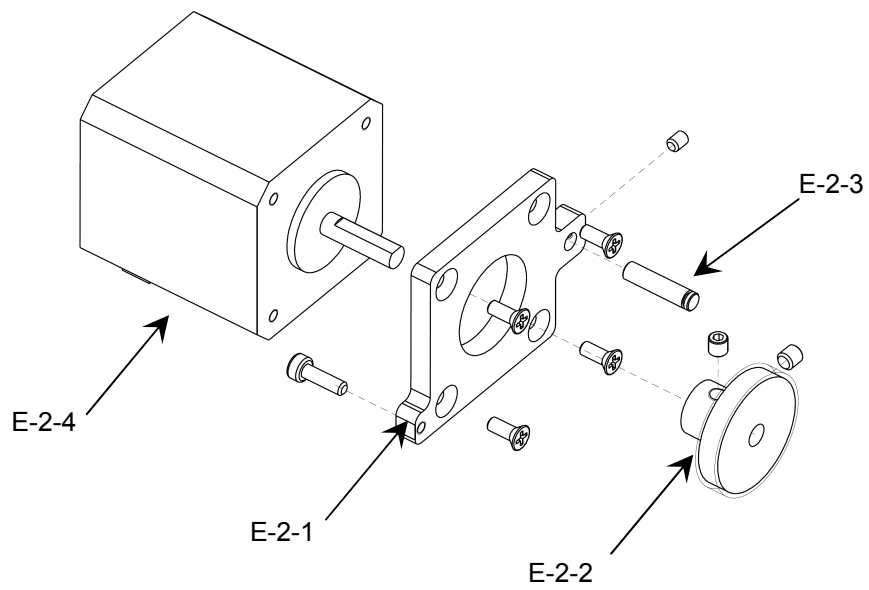
No.	Part Name	Code	Description	Qty
D-4-13	G2 LIFT NUT ASSY	G2MASSY250-AA		
D-4-13-1	G2 LIFT NUT PLATE	1200MP0G204-E		1
D-4-13-2	LIFT POINT OF CONTACT 1	1210A00G019-A		1
D-4-13-3	G3 Y NUT 1	1230A00G304-A		1
D-4-13-4	G3 Y NUT 2	1230A00G305-A		1
D-4-13-5	G3 Y NUT SPRING	3008A00G304-A		1
D-4-13-6	OIL FREE BUSHING	3010A000003-A		1
D-4-13-7	BALL BUSH (LMUW10)	3010A000015-A		2

[G4 GROOVING TOTAL ASSY]



1.6 G4 GROOVING TOTAL ASSY

No.	Part Name	Code	Description	Qty
E	G4 GROOVING TOTAL ASSY	G4MASSY026-AA		
E-1	G4 G MOTOR ASSY	G4MASSY028-AB		1
E-2	G4 G STEPMOTOR ASSY	G4MASSY056-AA		1
E-3	G4 G SHAFT ASSY	G4MASSY029-AA		1
E-4	G4 G BASE 1	1200MP01316-A		1
E-5	G4 G BASE 2	1200MP01317-A		1
E-6	G4 G MAIN GEAR	1220A004032-A		1
E-7	G3 G PI DOG	1310A00G304-A		1
E-8	G3 G PULLEY LOCK NUT	1210A00G304-A		1
E-9	G4 G ER CONNECTOR PLATE	1310A000141-A		1
E-10	G3 G ER CONNECTOR SPACER	1200MP0G307-A		2
E-11	G4 G ER CONNECTOR	1200MP01318-A		1
E-12	G4 G ER SPONGE	3099A000049-A		1
E-13	G4 G COVER 1	1200MP01319-A		1
E-14	G4 GROOVING PULLEY MAIN	1200A000275-A		1
E-15	BEARING (6703ZZ)	3002A00G302-A		2
E-16	V-RING (V-32A)	3004A00G302-A		1
E-17	SPRING (AWS 6-20)	3008A000257-A		1
E-18	DWEL PIN (Ø3-10L)	3022A00L002-A		4
E-19	DWEL PIN (Ø2-6L)	3022A00L001-A		2
E-20	O-RING(AN036)	3004A000246-A		1
E-21	O-RING(AN009)	3004A000243-A		2
E-22	PCB ASSY(SG233V-BLACK)	G3EPCB3003-AA		1
E-23	G4 PCB ASSY(EGB-400)	G4EPCB0007-AA		1
E-24	BELT (MXL80-6W)	3006A000013-A		1
E-25	G3 EGB-300 PROTECTOR	1250A00G301-B		1

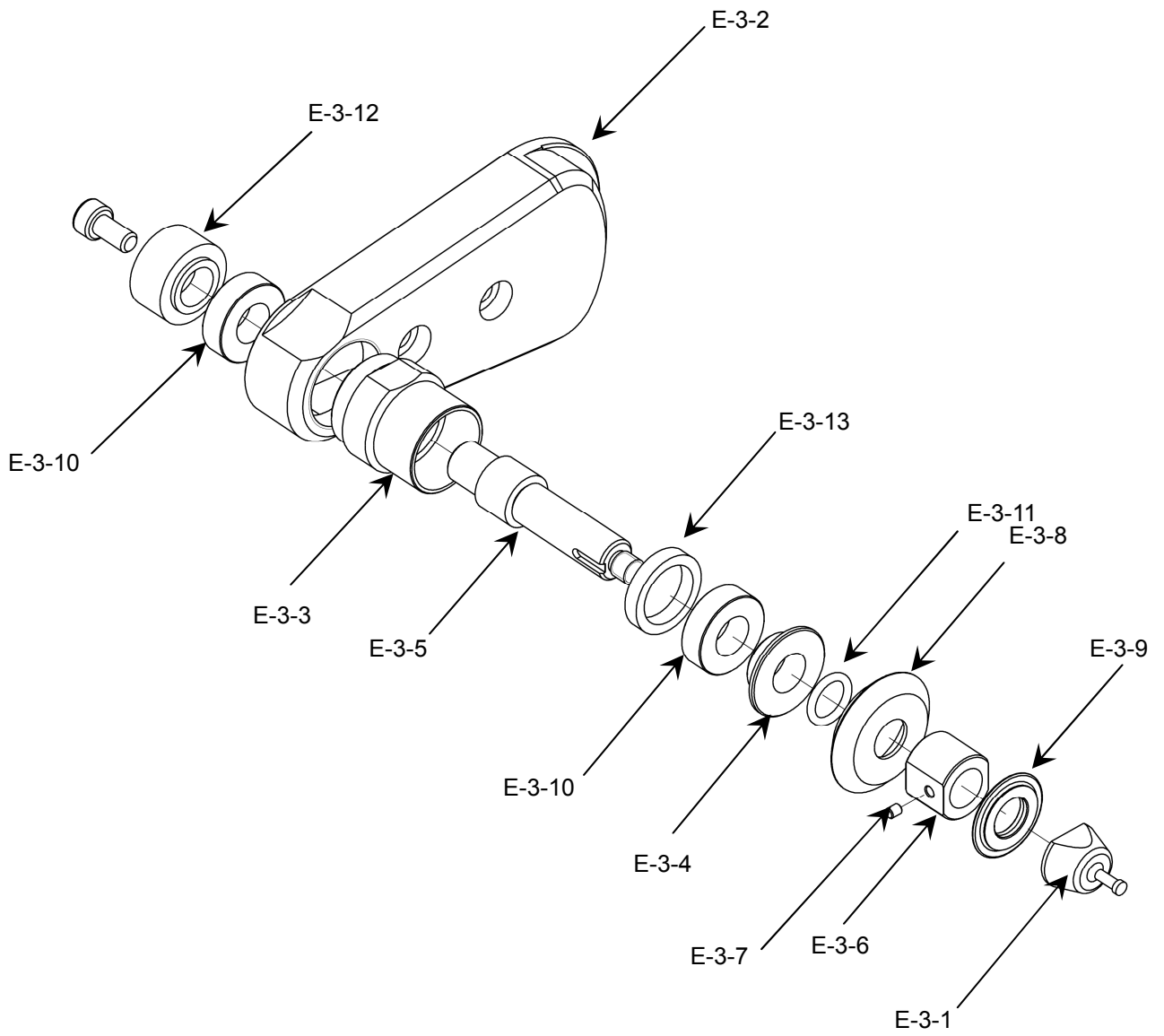
[G4 G MOTOR ASSY]**[G4 G STEPMOTOR ASSY]**

1.6. G4 GROOVING TOTAL ASSY (Continue)

No.	Part Name	Code	Description	Qty
E-1	G4 G MOTOR ASSY	G3MASSY017-AA		
E-1-1	G4 G PULLEY MAIN	1220A004062-A		1
E-1-2	G4 G BEARING SPACER	1200A000276-A		1
E-1-3	G3 G ROTATE STOPPER	1210A00G306-A		1
E-1-4	HARNESS(EGB(J3) TO SBG DC)	G4EHARS007-AA		1
E-1-5	BEARING (696ZZ)	3002A000005-A		2
E-1-6	DWEL PIN (ϕ 2-6L)	3022A00L001-A		2

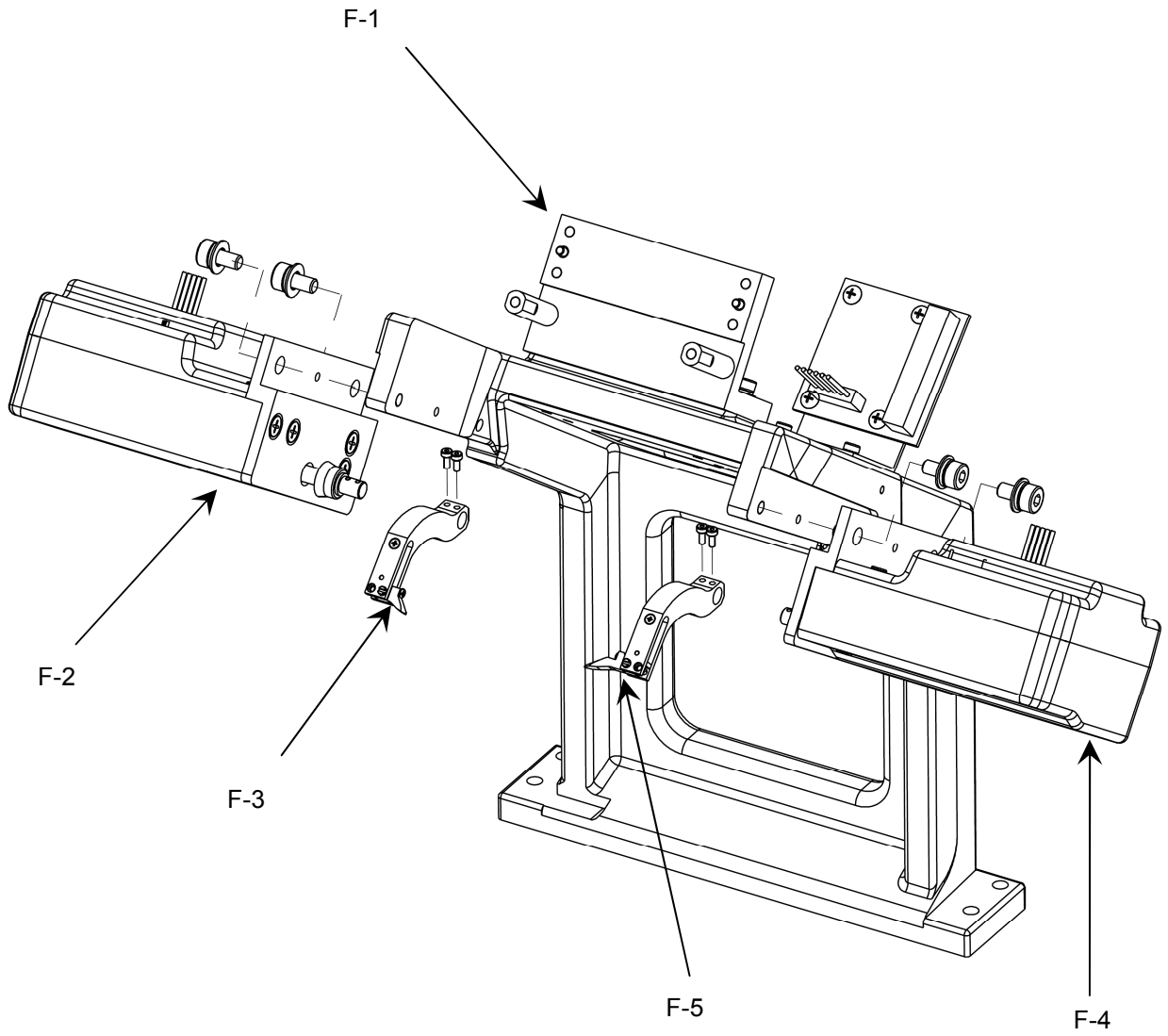
No.	Part Name	Code	Description	Qty
E-2	G4 G STEPMOTOR ASSY	G4MASSY056-AA		
E-2-1	G3 G STEPMOTOR PLATE	1200MP0G304-A		1
E-2-2	G4 G STEPMOTOR GEAR	1210A000748-A		1
E-2-3	G3 G STEPMOTOR HINGE PIN	1210A00G303-A		1
E-2-4	HARNESS(EGB(J4) TO SBG STEP MOTOR)	G3EHAR6004-AB		1

[G4 G SHAFT ASSY]



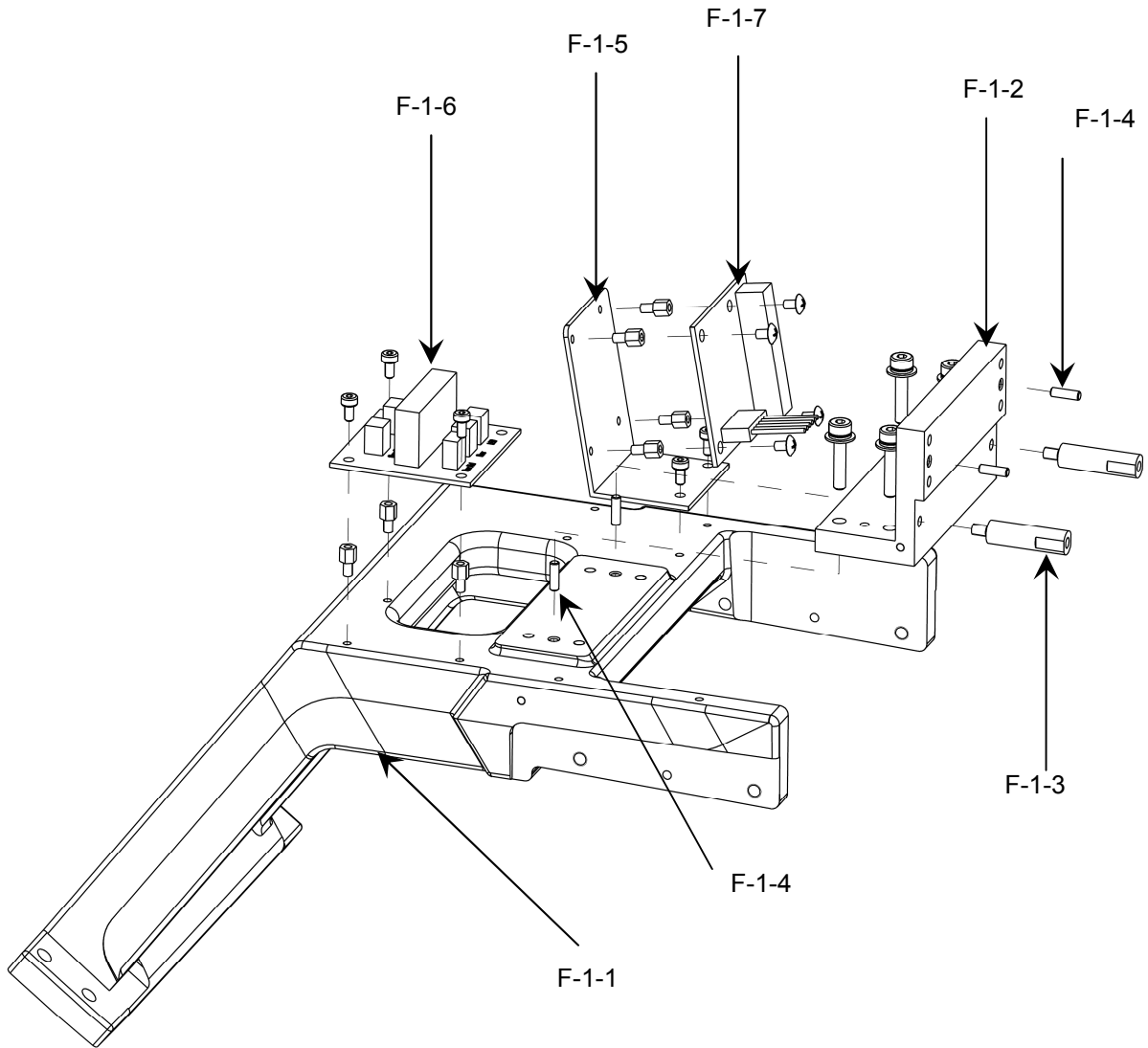
1.6. G4 GROOVING TOTAL ASSY (Continue)

No.	Part Name	Code	Description	Qty
E-3	G4 G SHAFT ASSY	G4MASSY029-AA		
E-3-1	G4 GROOVING WHEEL CLAMP	1210A000713-A		2
E-3-2	G4 G COVER 2	1200MP01320-A		1
E-3-3	G4 G SHAFT COVER	1210A000710-A		1
E-3-4	G3 G SEALING SPACER	1210A00G310-A		1
E-3-5	G4 G WHEEL SHAFT	1210A000711-A		1
E-3-6	G3 G WHEEL SPACER	1210A00G312-A		1
E-3-7	G3 G WHEEL CLAMP PIN	1210A00G314-A		1
E-3-8	G3 WHEEL SFB	1250MZ0G305-C		1
E-3-9	G3 WHEEL GROOVING	1250MZ0G306-B		1
E-3-10	BEARING (688ZZ)	3002A000018-A		2
E-3-11	O-RING (S08)	3004A000024-A		1
E-3-12	SHAFT PULLEY MXL 26	1220A00G012-B		1
E-3-13	SEALING (G12-16-3)	3004A000025-A		1

[G4 FEELER ASSY]

1.7 G4 FEELER ASSY

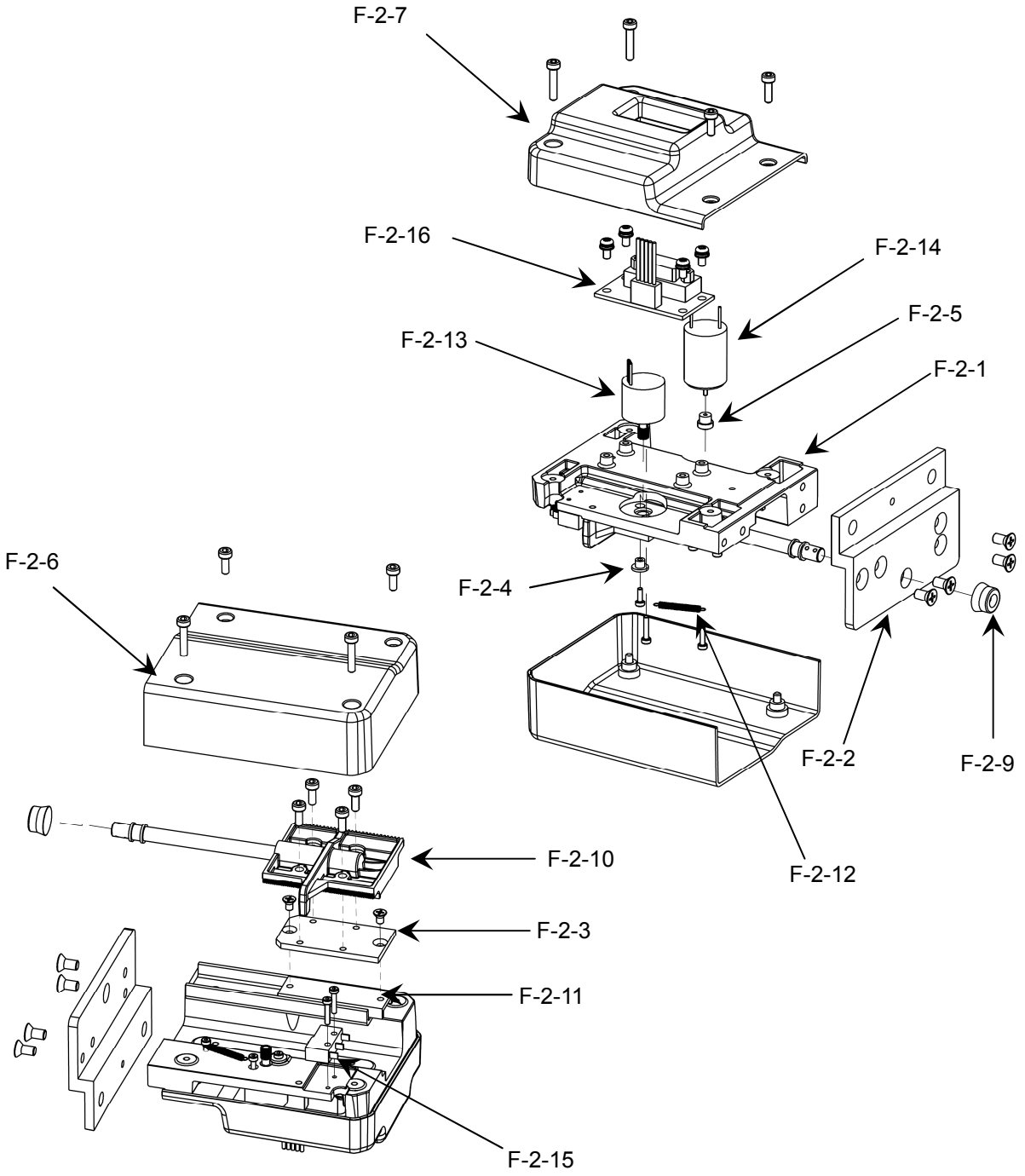
No.	Part Name	Code	Description	Qty
F	G4 FEELER ASSY	G4MASSY023-AA		
F-1	G4 FEELER STAND ASSY	G4MASSY072-AA		1
F-2	G4 FEELER ASSY LEFT	G4MASSY030-AA		1
F-3	G4 FEELER TIP ASSY LEFT	G4MASSY031-AB		1
F-4	G4 FEELER ASSY RIGHT	G4MASSY032-AA		1
F-5	G4 FEELER TIP ASSY RIGHT	G4MASSY033-AB		1

[G4 FEELER STAND ASSY]

1.7 G4 FEELER ASSY (Continue)

No.	Part Name	Code	Description	Qty
F-1	G4 FEELER STAND ASSY	G4MASSY072-AA		
F-1-1	G4 FEELER STAND	1200MP01315-A		1
F-1-2	G2 DRILL MOUNT BLOCK	1200MP0G205-A		1
F-1-3	G2 EDGING TOP SUPPORT	1220A00G203-A		2
F-1-4	DWEL PIN(3-10L)	3022A00L002-A		4
F-1-5	G4 DRILL BOARD BRK	1330MP00031-A		1
F-1-6	G4 PCB ASSY(EWB-400)	G4EPCB0008-AA		1
F-1-7	G4 PCB ASSY(EDB-400)	G4EPCB0005-AA		1

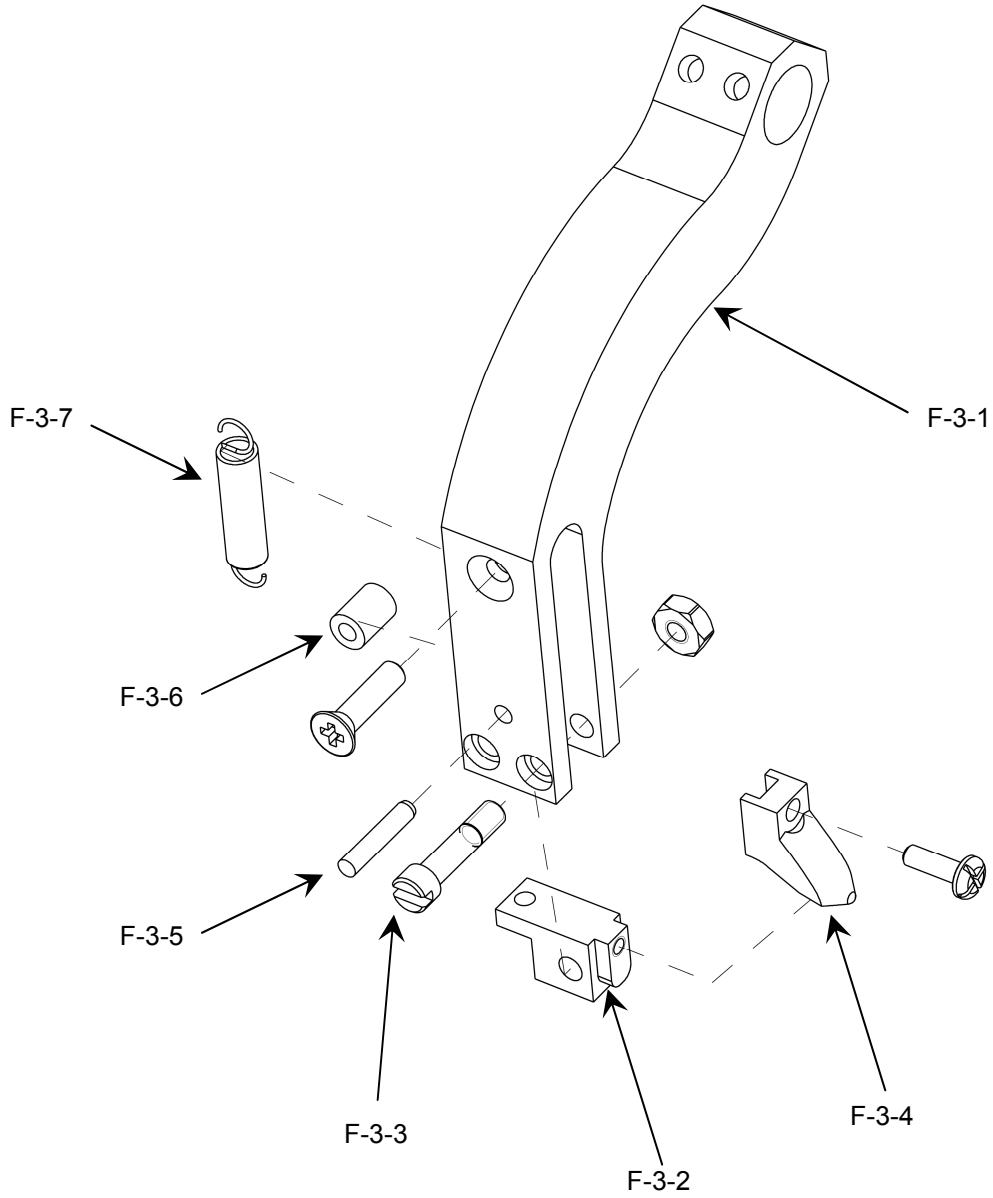
[G4 FEELER ASSY LEFT]



1.7 G4 FEELER ASSY (Continue)

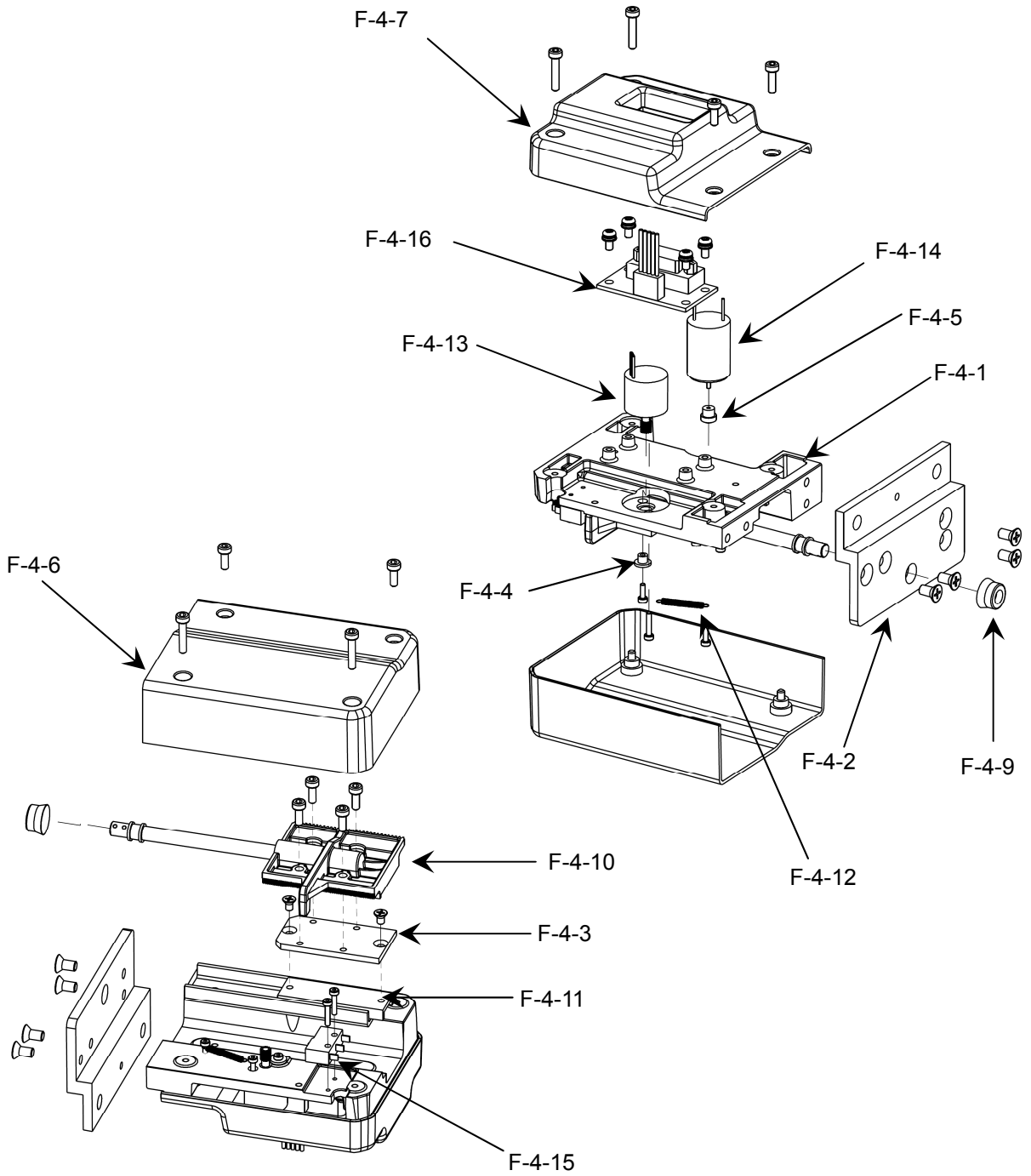
No.	Part Name	Code	Description	Qty
F-2	G4 FEELER ASSY LEFT	G4MASSY030-AA		
F-2-1	G2 FEELER BASE	1200MP0G206-F		1
F-2-2	G2 FEELER BASE BRK	1200MP0G207-B		1
F-2-3	G2 FEELER MOVING BLOCK SPACER	1200MP0G225-A		1
F-2-4	G2 FEELER ENCODER SPACER	1220A00G204-A		1
F-2-5	G2 FEELER DCMOTOR GEAR	1230A00G202-A		1
F-2-6	G2 FEELER COVER 1	2000A00G212-A		1
F-2-7	G2 FEELER COVER 2	2000A00G213-A		1
F-2-8	G4 FEELER ARM SEALING RUBBER	2040A000111-A		1
F-2-9	G2 FEELER ENCODER SPRING	3008A000028-A		1
F-2-10	G2 FEELER MOVING BLOCK LEFT	G2MASSY421-AB		1
F-2-11	LINEAR SLIDE	3012A000014-A		1
F-2-12	SPRING (AUT4-15)	3008A00G302-A		1
F-2-13	HARNESS(EFB(J10, J14) TO FEELER ENCODER)	G2EHARS005-AA		1
F-2-14	HARNESS(EFB(J11, J15) TO FEELER MOTOR)	G2EHARS015-AA		1
F-2-15	HARNESS(EFM(J12, J16) TO FEELER LIMIT SW)	G2EHAR4002-AA		1
F-2-16	PCB ASSY(EFB-210)	G2EPCB8003-AB		1

[G4 FEELER TIP ASSY LEFT]



1.7 G4 FEELER ASSY (Continue)

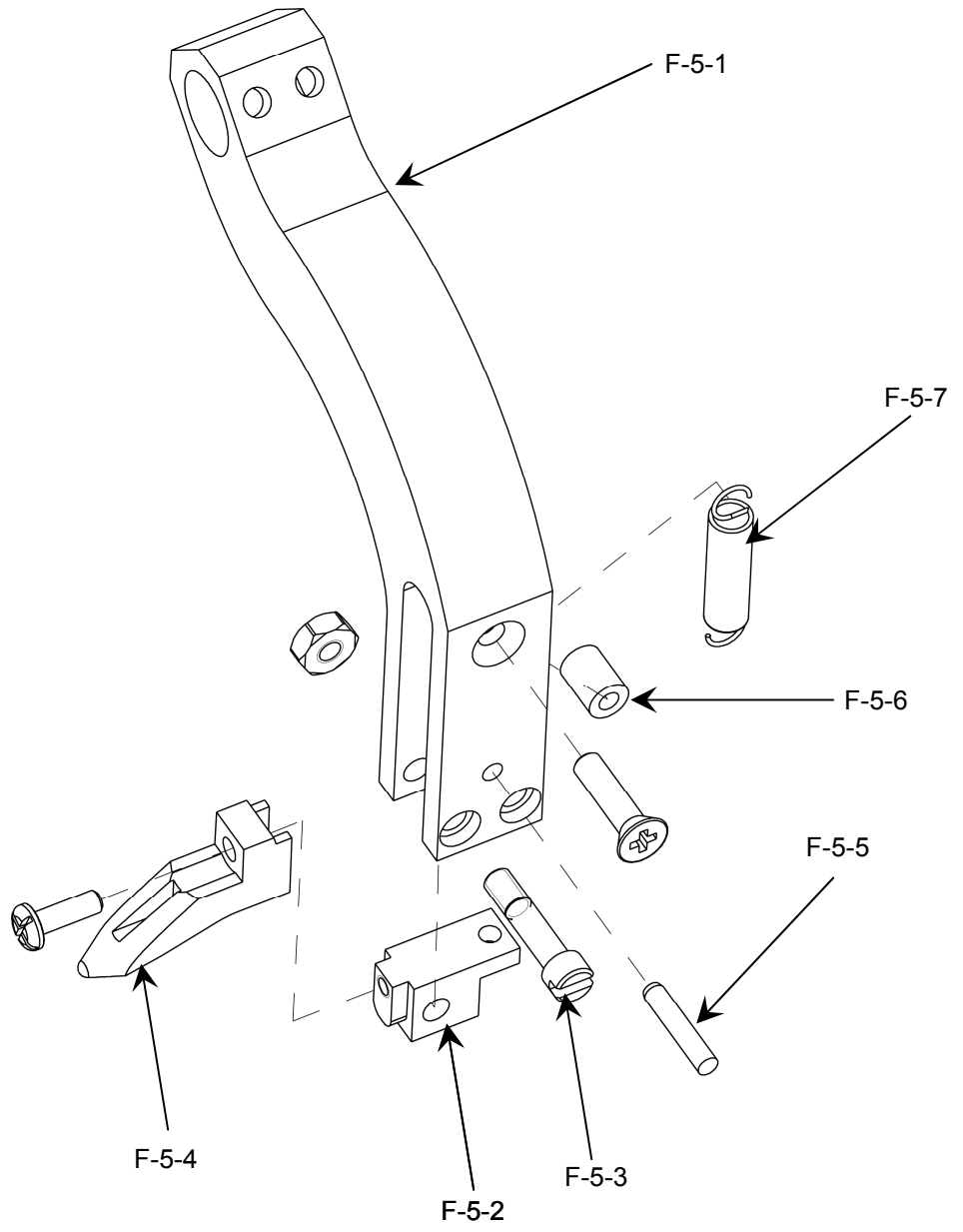
No.	Part Name	Code	Description	Qty
F-3	G4 FEELER TIP ASSY LEFT	G4MASSY031-AB		
F-3-1	G4 FEELER BODY	1200MP01376-A		1
F-3-2	G4 FEELER TIP ADAPTER	1200MP01377-A		1
F-3-3	G4 FEELER TIP ADAPTER PIN	1210A000768-A		1
F-3-4	G4 FEELER TIP SHORT	2090A000021-A		1
F-3-5	DOWEL PIN (MSCSS1.5-8)	3099A000048-A		1
F-3-6	G4 FEELER PIN SPACER	1200A000293-A		1
F-3-7	TENSION SPRING (AUS3-15)	3008A000270-A		1

[G4 FEELER ASSY RIGHT]

1.7 G4 FEELER ASSY (Continue)

No.	Part Name	Code	Description	Qty
F-4	G4 FEELER ASSY RIGHT	G4MASSY032-AB		
F-4-1	G2 FEELER BASE	1200MP0G206-F		1
F-4-2	G2 FEELER BASE BRK	1200MP0G207-B		1
F-4-3	G2 FEELER MOVING BLOCK SPACER	1200MP0G225-A		1
F-4-4	G2 FEELER ENCODER SPACER	1220A00G204-A		1
F-4-5	G2 FEELER DCMOTOR GEAR	1230A00G202-A		1
F-4-6	G2 FEELER COVER 1	2000A00G212-A		1
F-4-7	G2 FEELER COVER 2	2000A00G213-A		1
F-4-8	G4 FEELER ARM SEALING RUBBER	2040A000111-A		1
F-4-9	G2 FEELER ENCODER SPRING	3008A000028-A		1
F-4-10	G2 FEELER MOVING BLOCK RIGHT	G2MASSY431-AB		1
F-4-11	LINEAR SLIDE	3012A000014-A		1
F-4-12	SPRING (AUT4-15)	3008A00G302-A		1
F-4-13	HARNESS(EFB(J10, J14) TO FEELER ENCODER)	G2EHARS005-AA		1
F-4-14	HARNESS(EFB(J11, J15) TO FEELER MOTOR)	G2EHARS015-AA		1
F-4-15	HARNESS(EFM(J12, J16) TO FEELER LIMIT SW)	G2EHAR4002-AA		1
F-4-16	PCB ASSY(EFB-210)	G2EPCB8003-AB		1

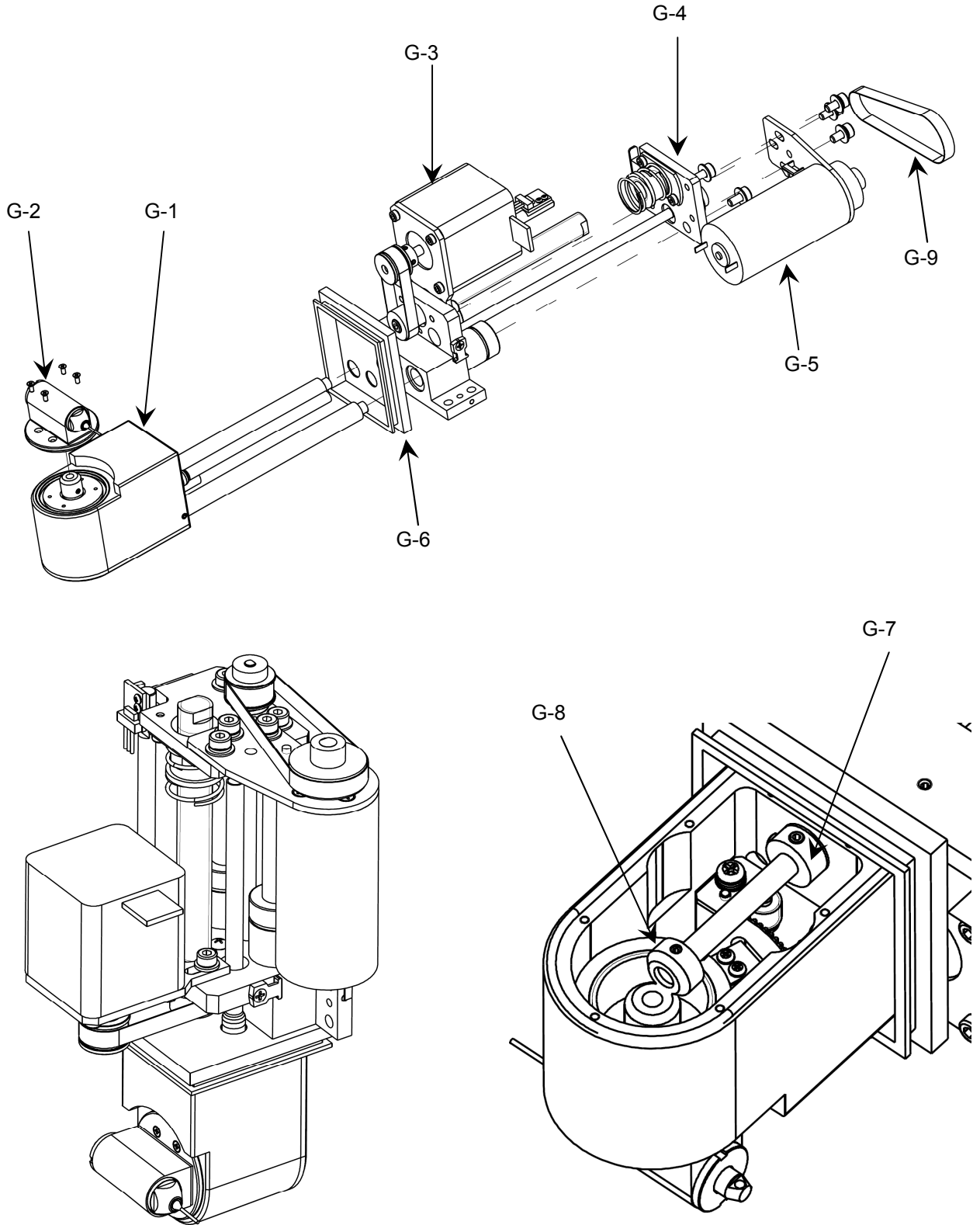
[G4 FEELER TIP ASSY RIGHT]



1.7 G4 FEELER ASSY (Continue)

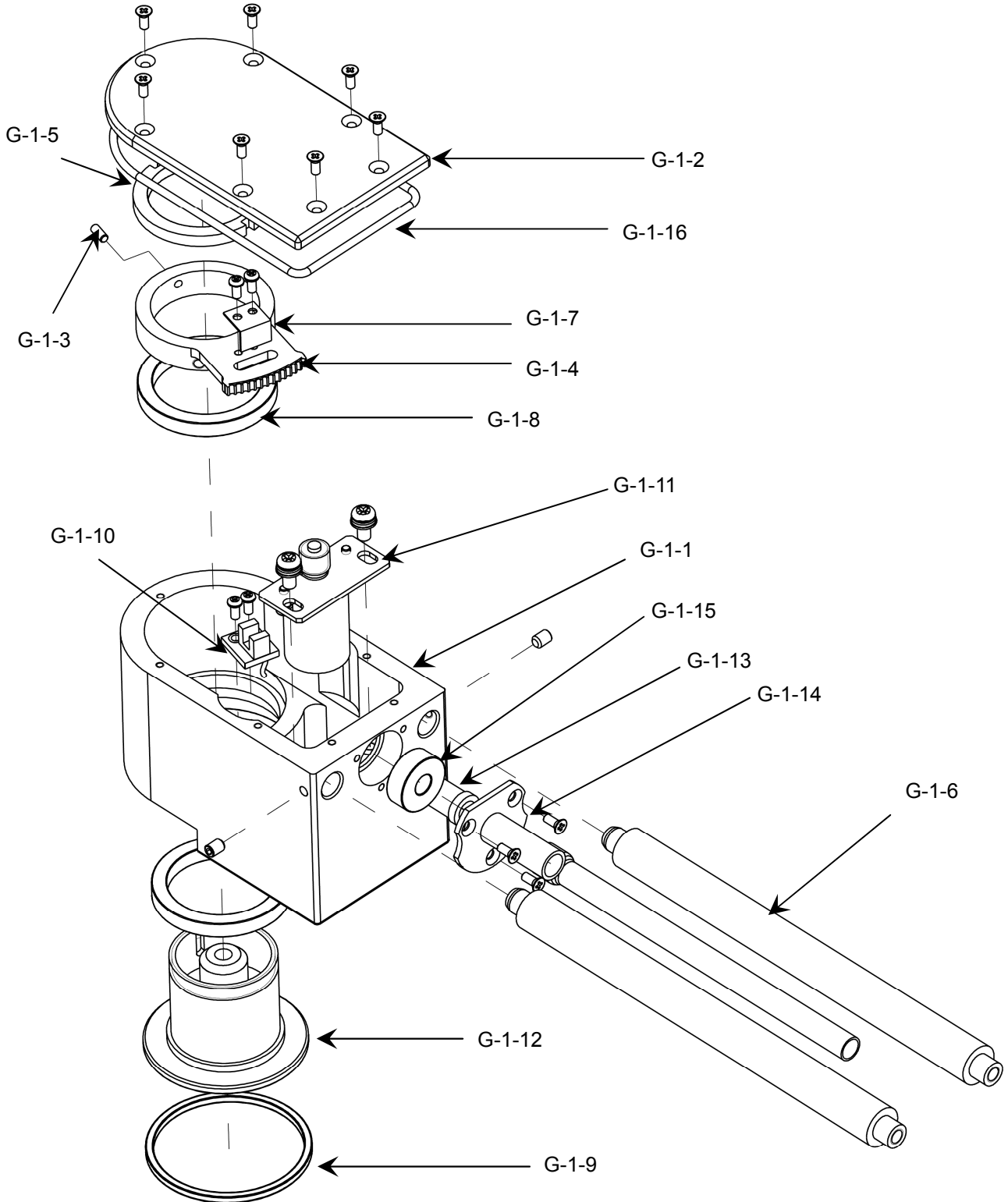
No.	Part Name	Code	Description	Qty
F-5	G4 FEELER TIP ASSY RIGHT	G4MASSY033-AB		
F-5-1	G4 FEELER BODY	1200MP01376-A		1
F-5-2	G4 FEELER TIP ADAPTER	1200MP01377-A		1
F-5-3	G4 FEELER TIP ADAPTER PIN	1210A000768-A		1
F-5-4	G4 FEELER TIP LONG	2090A000020-A		1
F-5-5	DOWEL PIN (MSCSS1.5-8)	3099A000048-A		1
F-5-6	G4 FEELER PIN SPACER	1200A000293-A		1
F-5-7	TENSION SPRING (AUT3-15)	3008A000272-A		1

[G4 DRILL ASSY]



1.8 G4 DRILL ASSY

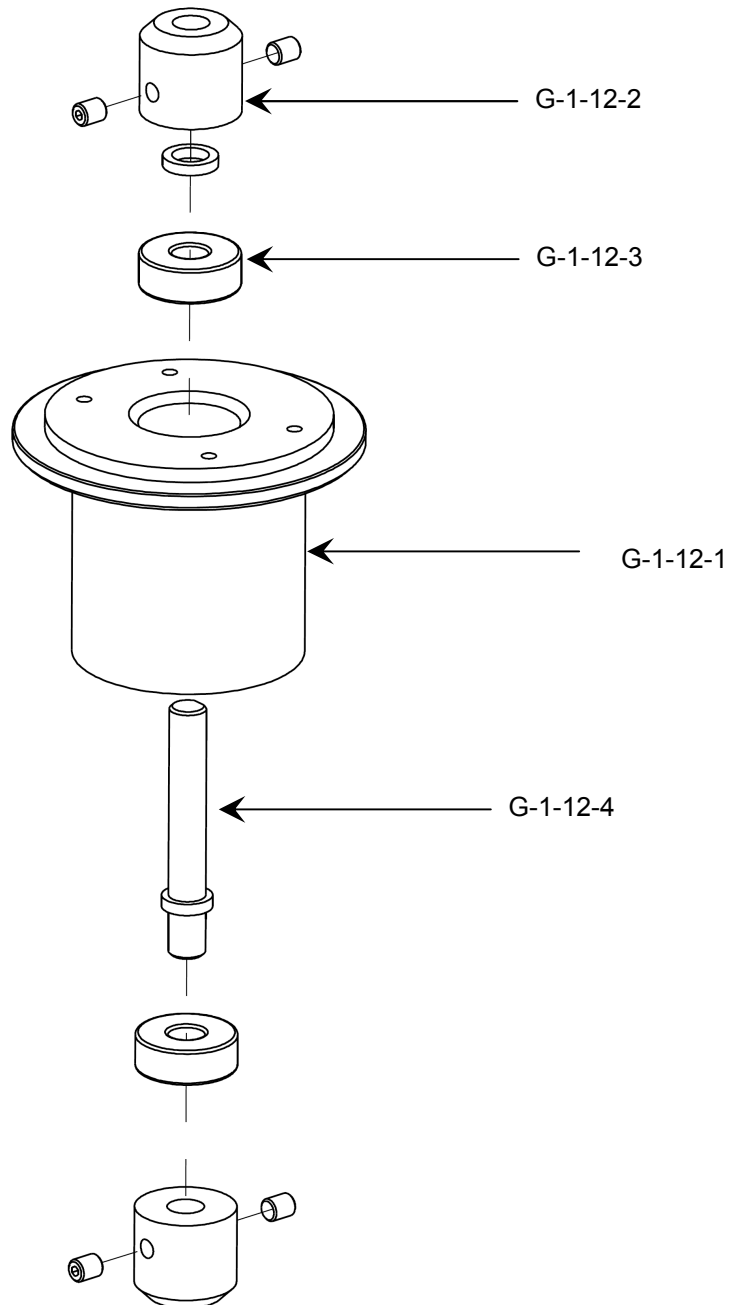
No.	Part Name	Code	Description	Qty
G	G4 DRILL ASSY	G4MASSY033-AB		
G-1	G4 DRILL BODY ASSY	G4MASSY012-AB		1
G-2	G4 DRILL HEAD ASSY	G4MASSY055-AA		1
G-3	G4 DRILL Y MOVING ASSY	G4MASSY015-AA		1
G-4	G4 DRILL MOVING PLATE ASSY	G4MASSY017-AA		1
G-5	G4 DRILL DC MOTOR ASSY	G4MASSY054-AB		1
G-6	G4 DRILL SEALING RUBBER	1200A000293-A		1
G-7	G4 DRILL SET COLLAR	1210A000784-A		1
G-8	G4 DRILL MOTOR BEVEL GEAR 2	1220A004061-A		1
G-9	BELT(TBN95MXL025)	3006A000254-A		1

[G4 DRILL BODY ASSY]

1.8 G4 DRILL ASSY (Continue)

No.	Part Name	Code	Description	Qty
G-1	G4 DRILL BODY ASSY	G4MASSY012-AB		
G-1-1	G4 DRILL BODY	1200A000294-A		1
G-1-2	G4 DRILL BODY COVER	1200A000300-A		1
G-1-3	DWEL PIN(2-6L)	3022A00L001-A		1
G-1-4	G4 DRILL TILTING GEAR	1220A004060-A		1
G-1-5	G2 DRILL CONNECTOR NUT	1220A00G208-A		1
G-1-6	G4 DRILL SLIDING SHAFT	1240MP00003-B		2
G-1-7	G2 DRILL TILTING DOG	1310A00G204-B		1
G-1-8	BALL BEARING (6705ZZ)	3002A000045-A		2
G-1-9	Quad-Ring (AS568-028)	3004A000037-A		1
G-1-10	HARNESS(EDB(J6) TO DRILL TILT PI)	G4EHARS004-AA		1
G-1-11	G4 DRILL STEP MOTOR ASSY	G4MASSY051-AB		1
G-1-12	G4 DRILL CONNECTOR ASSY	G4MASSY053-AB		1
G-1-13	G4 DRILL CABLE DUCT	1200A000296-A		1
G-1-14	G4 DRILL BODY SEAL RING	1200A000295-A		1
G-1-15	605ZZ	3002A000270-A		1
G-1-16	O-RING(AN037)	3004A000247-A		1

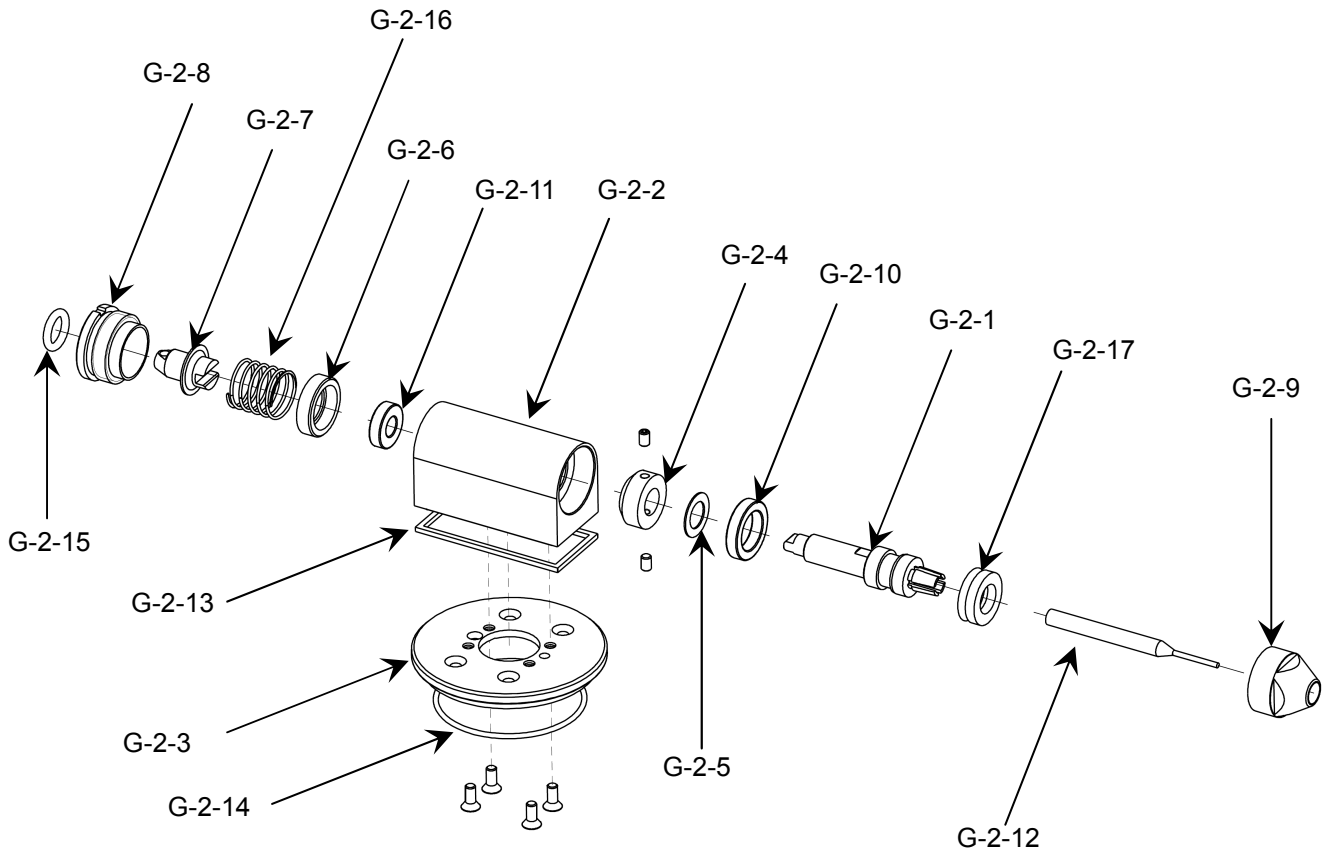
[G4 DRILL CONNECTOR ASSY]



1.8 G4 DRILL ASSY (Continue)

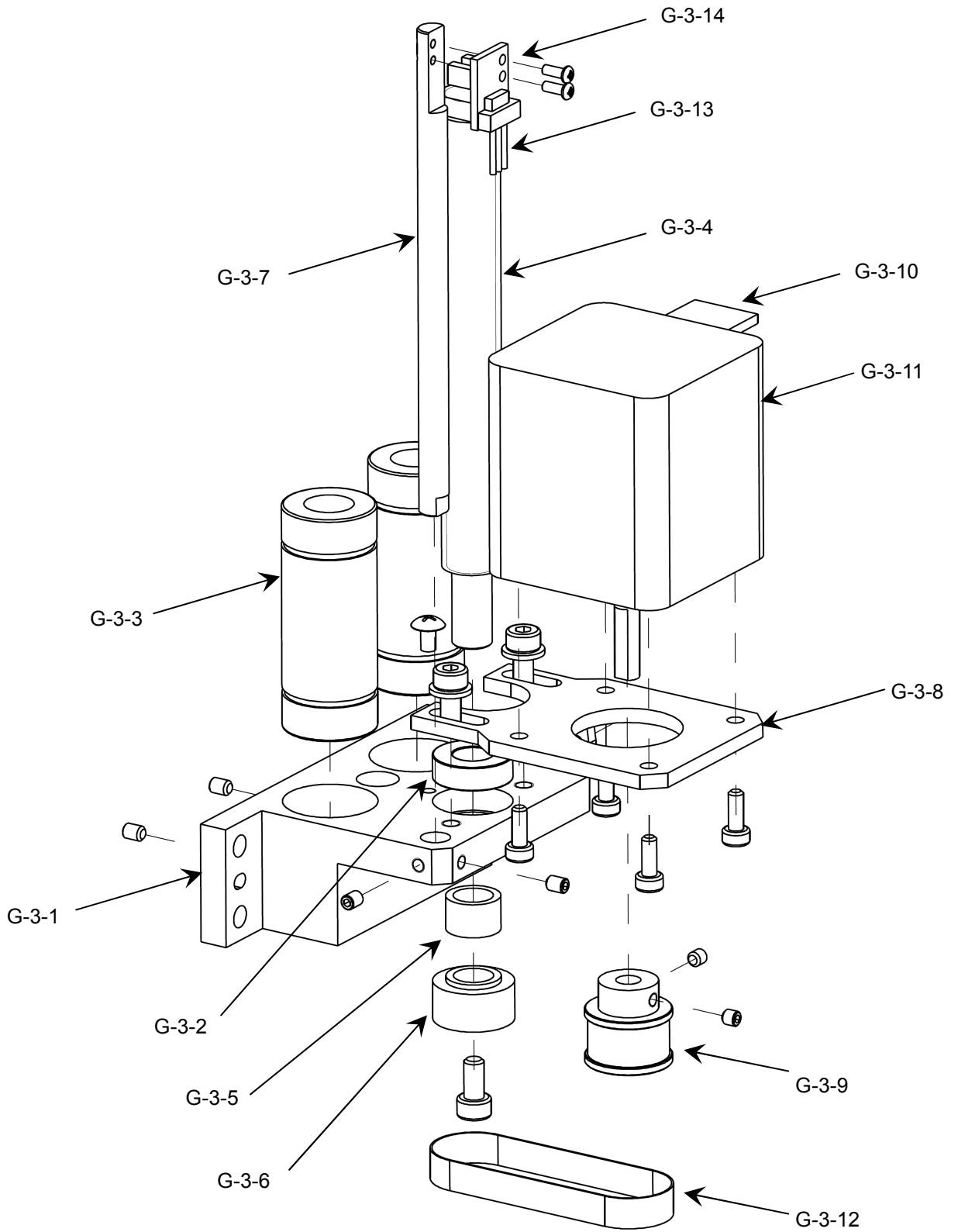
No.	Part Name	Code	Description	Qty
G-1-12	G4 DRILL CONNECTOR ASSY	G4MASSY053-AB		
G-1-12-1	G4 DRILL CONNECTOR BODY	1220A004058-A		1
G-1-12-2	G4 DRILL MOTOR BEVEL GEAR 1	1220A004059-A		2
G-1-12-3	BEARING (694ZZ)	3002A000003-A		2
G-1-12-4	G4 DRILL SPINDLE CONNECTOR	1210A000782-A		1

[G4 DRILL HEAD ASSY]



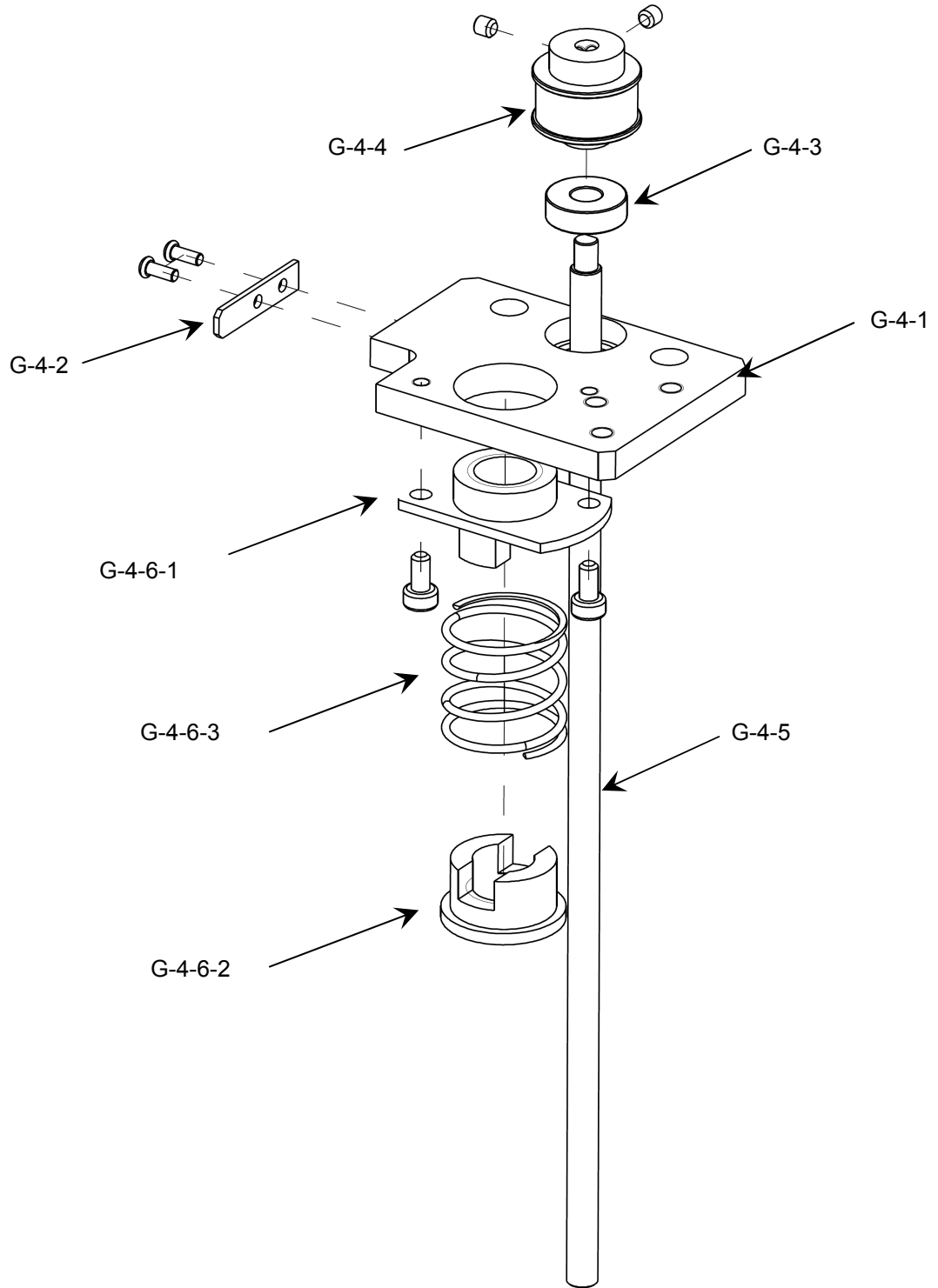
1.8 G4 DRILL ASSY (Continue)

No.	Part Name	Code	Description	Qty
G-2	G4 DRILL HEAD ASSY	G4MASSY055-AA		
G-2-1	G4 DRILL SHAFT	1210A000703-A		1
G-2-2	G4 DRILL HEAD HOUSING 1	1210A000704-A		1
G-2-3	G2 DRILL HEAD HOUSING 2	1200MP0G213-C		1
G-2-4	G2 DRILL BEVEL GEAR	1220A00G209-A		1
G-2-5	G2 DRILL BEVEL SPACER	1040A00G202-A		1
G-2-6	G4 DRILL HEAD SPACER	1210A000705-A		1
G-2-7	G2 DRILL HEAD KONB	1210A00G210-D		1
G-2-8	G2 DRILL HEAD CAP	1210A000760-A		1
G-2-9	G4 DRILL JAW CAP	1210A000799-A		1
G-2-10	BALL BEARING (678-OPEN)	3002A000046-A		1
G-2-11	BALL BEARING(684OP)	3002A000047-A		1
G-2-12	DRILL BIT	3099A000010-A		1
G-2-13	G4 DRILL SEALING PLATE	2040A000109-A		1
G-2-14	O-ring(1mm-ID28mm)	3004A000038-A		1
G-2-15	O-RING(S6)	3004A000245-A		1
G-2-16	SPRING(UR10-10)	3008A000264-A		1
G-2-17	V-RING(VA007)	3004A000240-A		1

[G4 DRILL Y MOVING ASSY]

1.8 G4 DRILL ASSY (Continue)

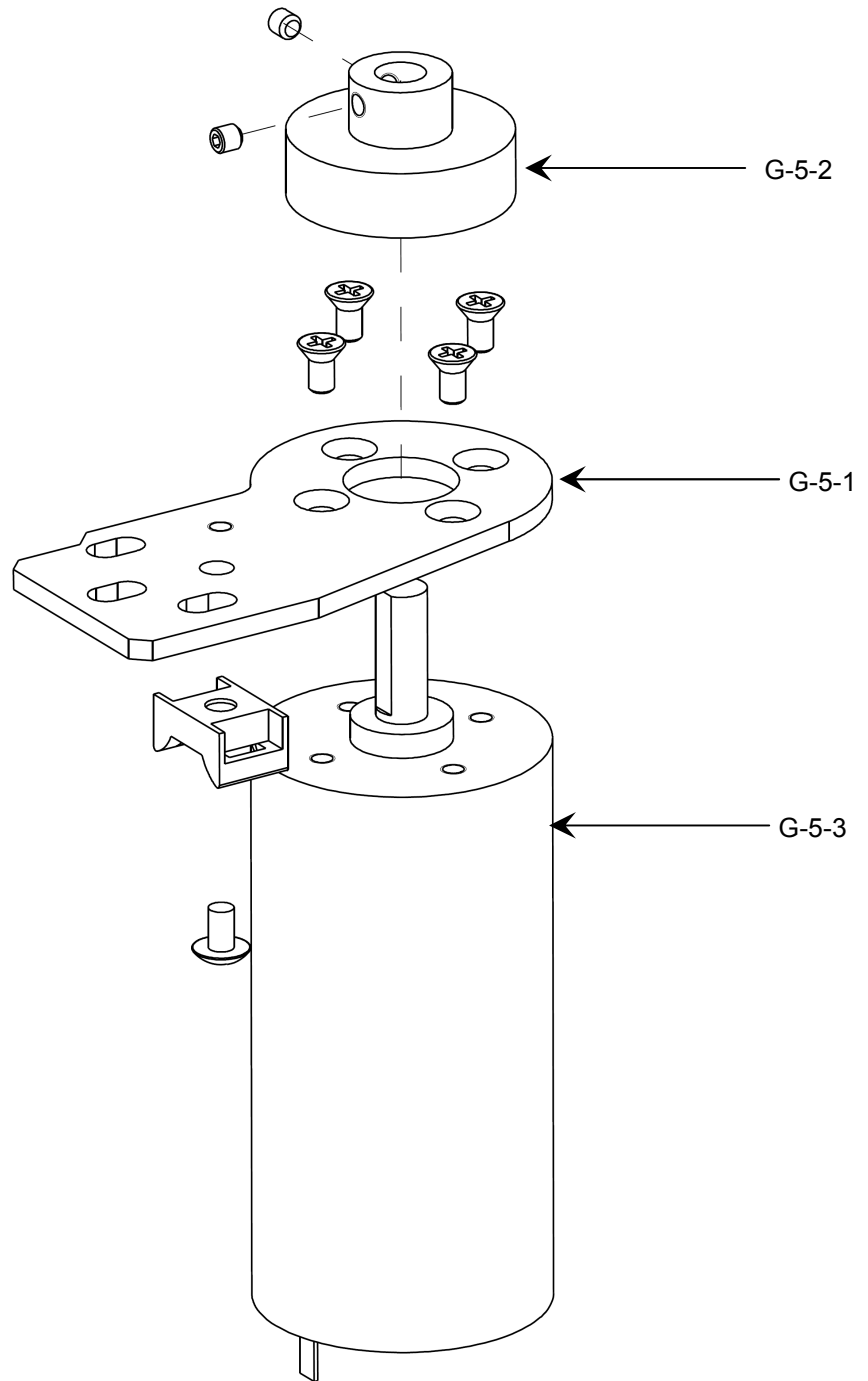
No.	Part Name	Code	Description	Qty
G-3	G4 DRILL Y MOVING ASSY	G4MASSY015-AA		
G-3-1	G4 DRILL BUSH HOUSING	1200A000253-A		1
G-3-2	BEARING (688ZZ)	3002A000018-A		1
G-3-3	BALL BUSH (LMUD10)	3010A006044-A		2
G-3-4	G4 DRILL SCREW	1220A004030-A		1
G-3-5	G4 DRILL BEARING SPACER	1200A000254-A		1
G-3-6	SHAFT PULLEY MXL 26	1220A00G012-B		1
G-3-7	G4 DRILL SENSOR SHAFT	1210A000708-A		1
G-3-8	G4 DRILL MOTOR PLATE	1330MP00002-A		1
G-3-9	G4 DRILL MAIN PULLEY	1220A004031-A		1
G-3-10	HARNESS(EDB(J5) TO DRILL Y STEP)	G4EHAR0048-AA		1
G-3-11	STEP MOTOR	6430TMT4S46-A		1
G-3-12	BELT(TBN63MXL025)	3006A000252-A		1
G-3-13	HARNESS(EDB(J4) TO DRILL Y PI)	G4EHAR0056-AA		1
G-3-14	PCB ASSY(SG233V-BLACK)	G3EPCB3003-AA		1

[G4 DRILL MOVING PLATE ASSY]

1.8 G4 DRILL ASSY (Continue)

No.	Part Name	Code	Description	Qty
G-4	G4 DRILL MOVING PLATE ASSY	G4MASSY017-AA		
G-4-1	G4 DRILL SLIDING END PLATE	1200A000255-A		1
G-4-2	G2 ROTATION SENSOR-DOG	1310A00G202-B		1
G-4-3	BEARING (695ZZ)	3002A000004-A		1
G-4-4	G4 DRILL MOTOR PULLEY 2	1200A000298-A		1
G-4-5	G4 DRILL ROTATION SHAFT	1210A000783-A		1
G-4-6	G4 DRILL NUT ASSY	G4MASSY018-AA		1

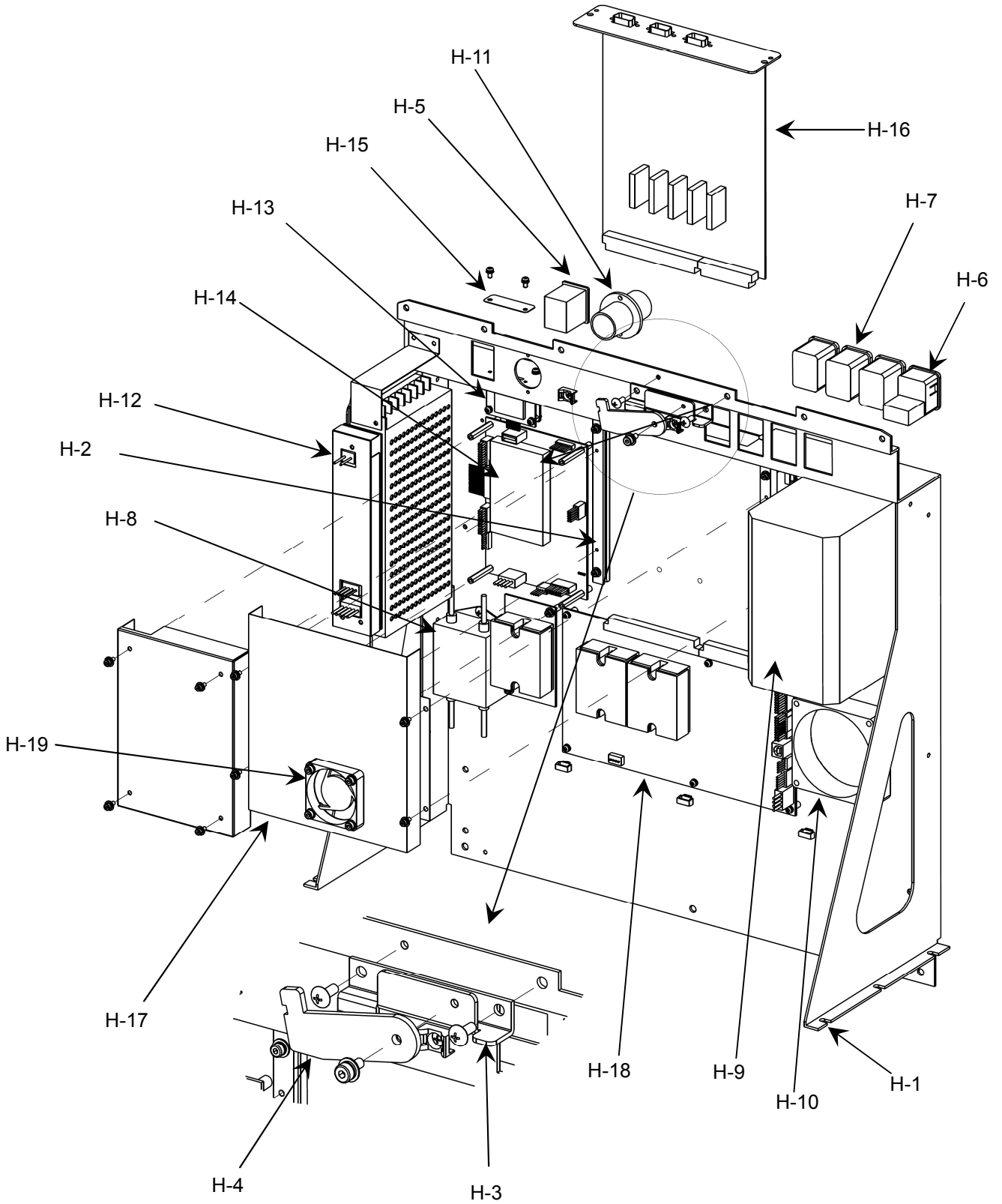
No.	Part Name	Code	Description	Qty
G-4-6	G4 DRILL NUT ASSY	G4MASSY018-AA		
G-4-6-1	G4 DRILL NUT 1	1230A000272-A		1
G-4-6-2	G4 DRILL NUT 2	1230A000273-A		1
G-4-6-3	SPRING(WF20-20)	3008A000269-A		1

[G4 DRILL DC MOTOR ASSY]

1.8 G4 DRILL ASSY (Continue)

No.	Part Name	Code	Description	Qty
G-5	G4 DRILL DC MOTOR ASSY	G4MASSY054-AB		
G-5-1	G4 DRILL DC MOTOR BRK	1330MP00026-A		1
G-5-2	G4 DRILL MOTOR PULLEY	1200A000297-A		1
G-5-3	HARNESS(EDB(J3) TO DRILL DC)	G4EHARS006-AA		1

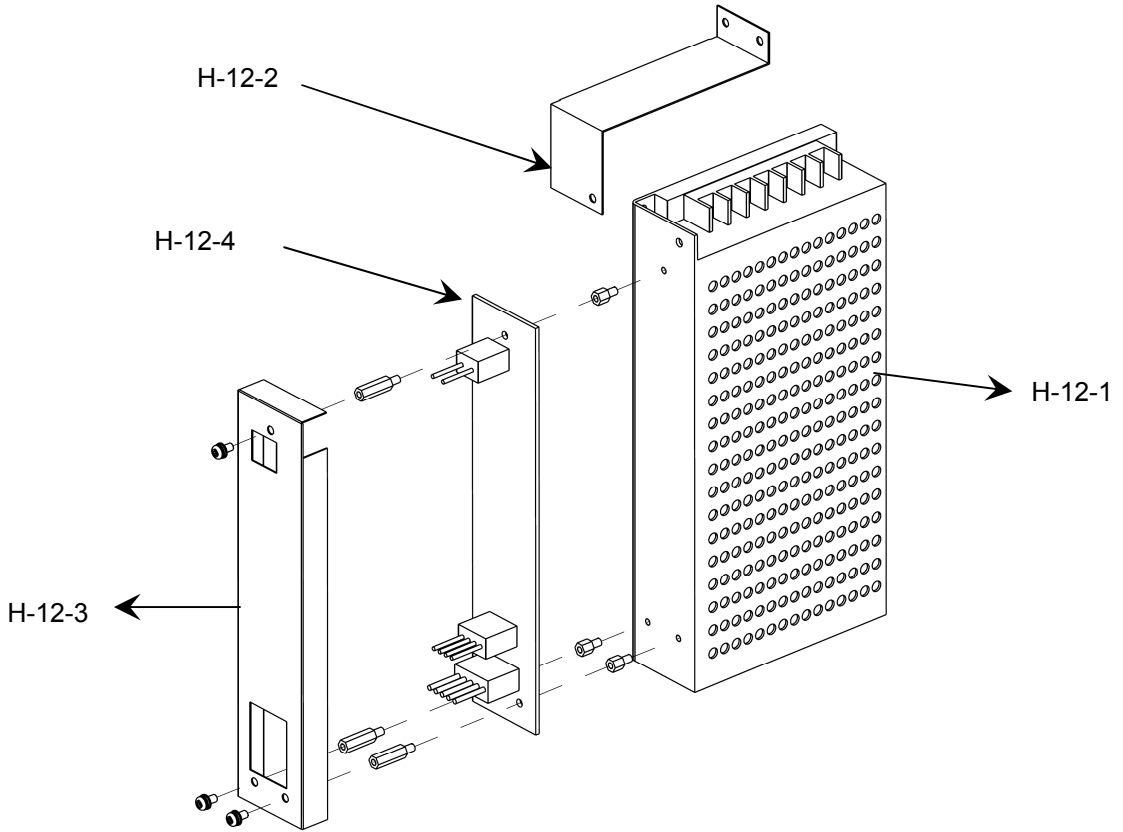
[G4 EL BACK BRK 220V ASSY]



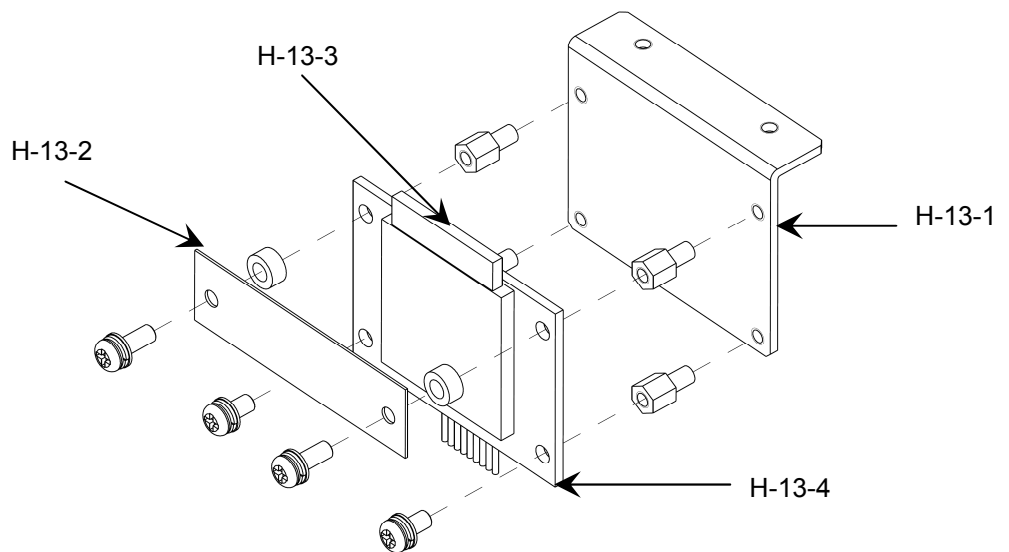
1.9 G4 EL BACK BRK 220V ASSY

No.	Part Name	Code	Description	Qty
H(220)	G4 EL BACK BRK 220V ASSY	G4MASSY003-AB	220V MODEL	
H-1	G4 EL BACK BRK 220V	1330MP00007-A		1
H-2	G2 GUI BD GUIDE BLOCK	1230A00G201-B		2
H-3	G2 STAY LOW BRK	1330MP0G203-B		1
H-4	G2 STAY LOW	1330MP0G204-B		1
H-5	SWITCH(ON-OFF)	7600SOF8216-A		1
H-6	FUSE INLET(SCHURTER)	7604ACI0503-A		1
	FUSE, SCHURTER	7610S003127-A	220V MODEL FUSE	2
H-7	OUTLET	7604ACO6600-A		3
H-8	NOISE FILTER (220V)	6810F000110-A		1
H-9	SERVO MOTOR DRIVER(HPE 220V)	6450T00TM30-A		1
H-10	HARNESS(EBB(J22) TO FAN)	G3EHARS009-AC		1
H-11	G3 GAS DUCT	1200MP0G310-B		1
H-12	G4 SMPS ASSY	G4MASSY004-AA		1
H-13	G4 SD CARD ASSY	G4MASSY006-AA		1
H-14	G4 GUI BD ASSY	G4MASSY007-AA	GUI BOARD	1
H-15	G2 SD CARD COVER BRK	1310A00G212-B		1
H-16	G4 SERIAL PORT BRK ASSY	G4MASSY005-AA	DRILL MODEL	1
	G4 SERIAL PORT BRK ND ASSY	G4MASSY061-AA	NON-DRILL MODEL	1
H-17	G4 ECM 400 SHIELD COVER	1330MP00009-A		1
H-18	G4 PCB ASSY(EBB-400)	G4EPCB0003-AA	BASE BOARD	1
H-19	HARNESS(ECM FAN)	G4EHARS001-AA		1
H-20	G4 PCB ASSY(EFN-400)	G4EPCB0004-AA	VACUUM MODEL ONLY	1

[G4 SMPS ASSY]



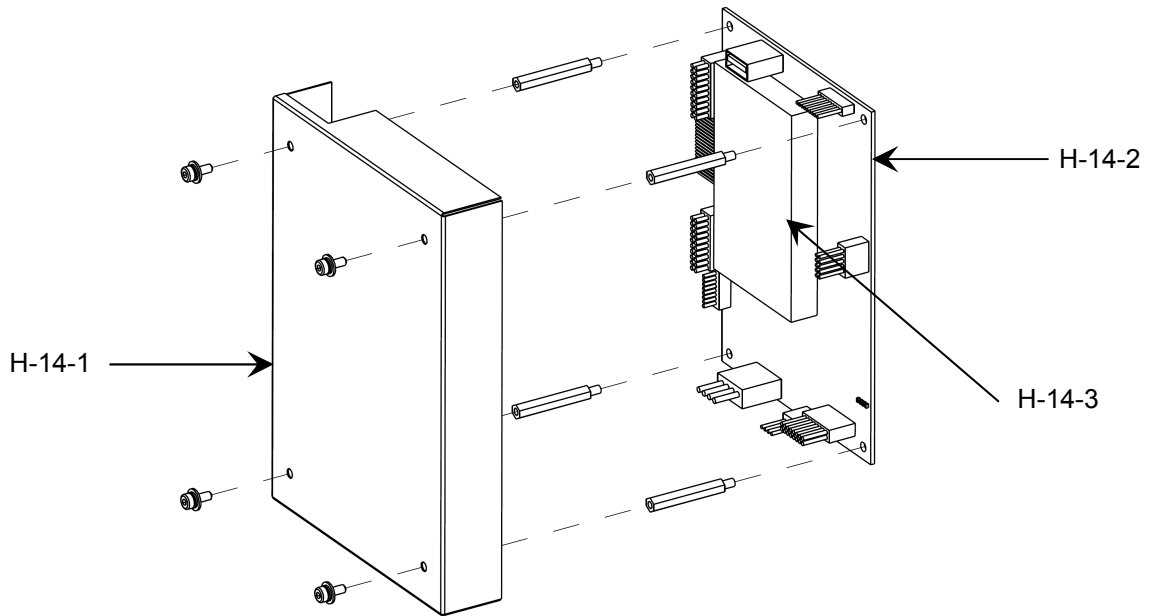
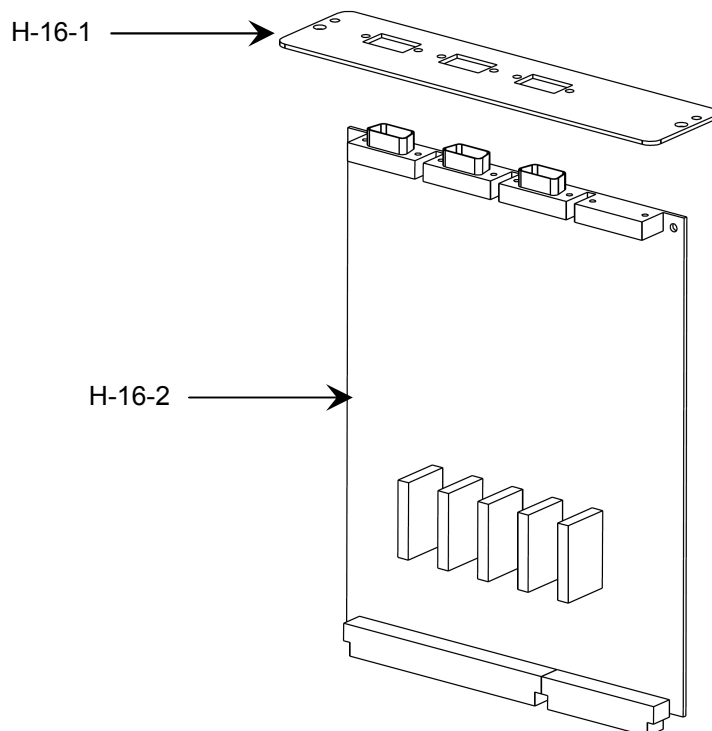
[G4 SD CARD ASSY]



1.9 G4 EL BACK BRK ASSY (220V) (Continue)

No.	Part Name	Code	Description	Qty
H-12	G4 SMPS ASSY	G4MASSY004-AA		
H-12-1	SMPS(RS-150-24)	7501POW0003-A		1
H-12-2	G2 SMPS UPPER COVER	1340A000005-B		1
H-12-3	G0 SMPS FRONT COVER	1250A000039-B		1
H-12-4	PCB ASSY(EPW-110)	G0EPCB0002-AB		1

No.	Part Name	Code	Description	Qty
H-13	G4 SD CARD ASSY	G4MASSY006-AA		
H-13-1	G4 SD CARD BRK	1330MP00006-A		1
H-13-2	G4 SD CARD COVER	1340A000006-B		1
H-13-3	SD CARD	7999S000001-A		1
H-13-4	PCB ASSY(BSD-301)	G3EPCB8005-AB		1

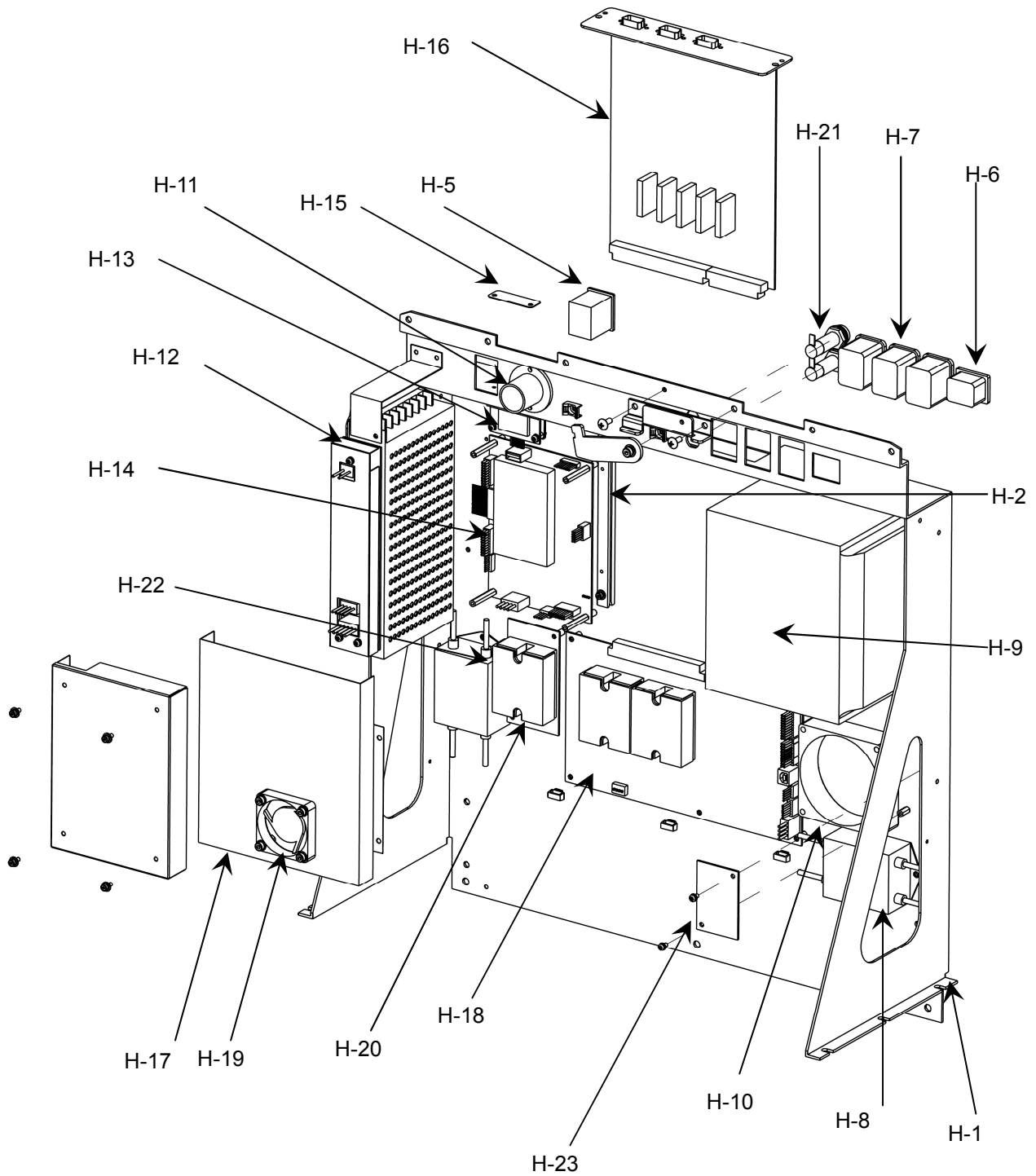
[G4 GUI BOARD ASSY]**[G4 SERIAL PORT BRK ASSY]**
[G4 SERIAL PORT BRK ND ASSY]

1.9 G4 EL BACK BRK ASSY (220V) (Continue)

No.	Part Name	Code	Description	Qty
H-14	G4 GUI BD ASSY	G4MASSY007-AA		
H-12-1	G3 GUI BD SHIID COVER	1330MP0G316-A		1
H-12-2	G4 PCB ASSY(EGM-400)	G4EPCB0001-AA		1
H-12-3	G4 PCB ASSY(S5P-210)	G4EPCB0013-AA		1

No.	Part Name	Code	Description	Qty
H-16	G4 SERIAL PORT BRK ASSY	G4MASSY005-AA	DRILL MODEL	
H-16-1	G4 SERIAL PORT BRK	1330MP00005-A		1
H-16-2	G4 PCB ASSY(ECM-400)	G4EPCB0002-AA	DRILL MODEL MOTOR BOARD	1

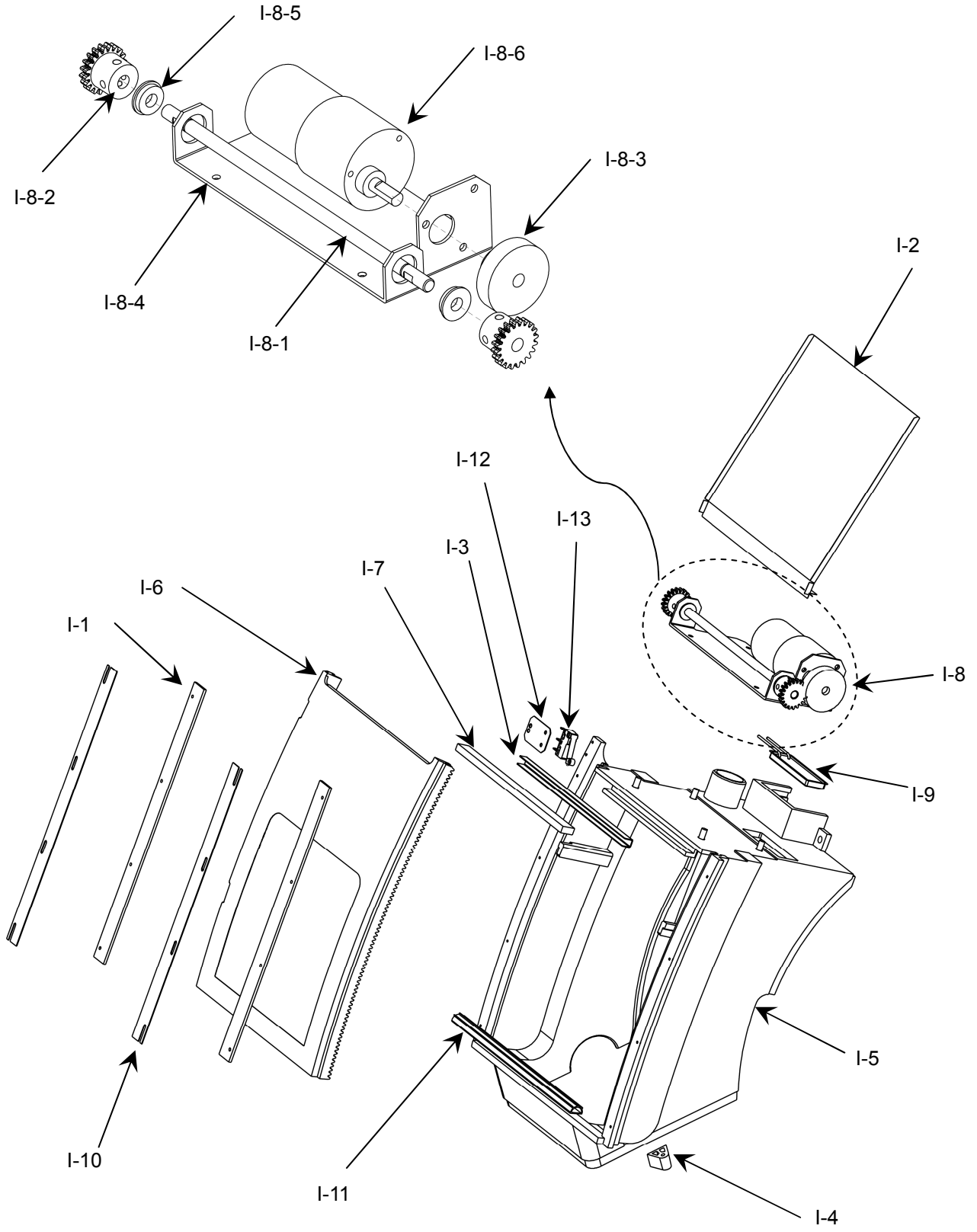
No.	Part Name	Code	Description	Qty
H-16	G4 SERIAL PORT BRK ND ASSY	G4MASSY061-AA	NON-DRILL MODEL	
H-16-1	G4 SERIAL PORT BRK	1330MP00005-A		1
H-16-2	G4 PCB ASSY(ECM-400ND)	G4EPCB0015-AA	NON-DRILL MODEL MOTOR BOARD	1

[G4 EL BACK BRK 110V ASSY 1

1.10 G4 EL BACK BRK 110V ASSY

No.	Part Name	Code	Description	Qty
H(110)	G4 EL BACK BRK 110V ASSY	G4MASSY025-AB	110V MODEL	
H-1	G4 EL BACK BRK 110V	1330MP00004-A		1
H-2	G2 GUI BD GUIDE BLOCK	1230A00G201-B		2
H-3	G2 STAY LOW BRK	1330MP0G203-B		1
H-4	G2 STAY LOW	1330MP0G204-B		1
H-5	SWITCH(ON-OFF)	7600SOF8216-A		1
H-6	INLET	7604ACI0711-A		1
H-7	OUTLET	7604ACO6600-A		3
H-8	NOISE FILTER (220V)	6810F000110-A		1
H-9	SERVO MOTOR DRIVER(TM05 110V)	6450T00TM50-A		1
H-10	HARNESS(EBB(J22) TO FAN)	G3EHARS009-AC		1
H-11	G3 GAS DUCT	1200MP0G310-B		1
H-12	G4 SMPS ASSY	G4MASSY004-AA		1
H-13	G4 SD CARD ASSY	G4MASSY006-AA		1
H-14	G4 GUI BD ASSY	G4MASSY007-AA	GUI BOARD	1
H-15	G2 SD CARD COVER BRK	1310A00G212-B		1
H-16	G4 SERIAL PORT BRK ASSY	G4MASSY005-AA	DRILL MODEL	1
	G4 SERIAL PORT BRK ND ASSY	G4MASSY061-AA	NON-DRILL MODEL	1
H-17	G4 ECM 400 SHIELD COVER	1330MP00009-A		1
H-18	G4 PCB ASSY(EBB-400)	G4EPCB0003-AA	BASE BOARD	1
H-19	HARNESS(ECM FAN)	G4EHARS001-AA		1
H-20	G4 PCB ASSY(EFN-400)	G4EPCB0004-AA	VACUUM MODEL ONLY	1
H-21	FUSE HOLDER	7612S200345-A		2
	FUSE	7612S153260-A	110V MODEL FUSE	2
H-22	NOISE FILTER (110V)	6810F000120-A		1
H-23	PCB ASSY(ETM-500)	G3EPCB2001-AA		1

[G3 C EDGING TOP ASSY]

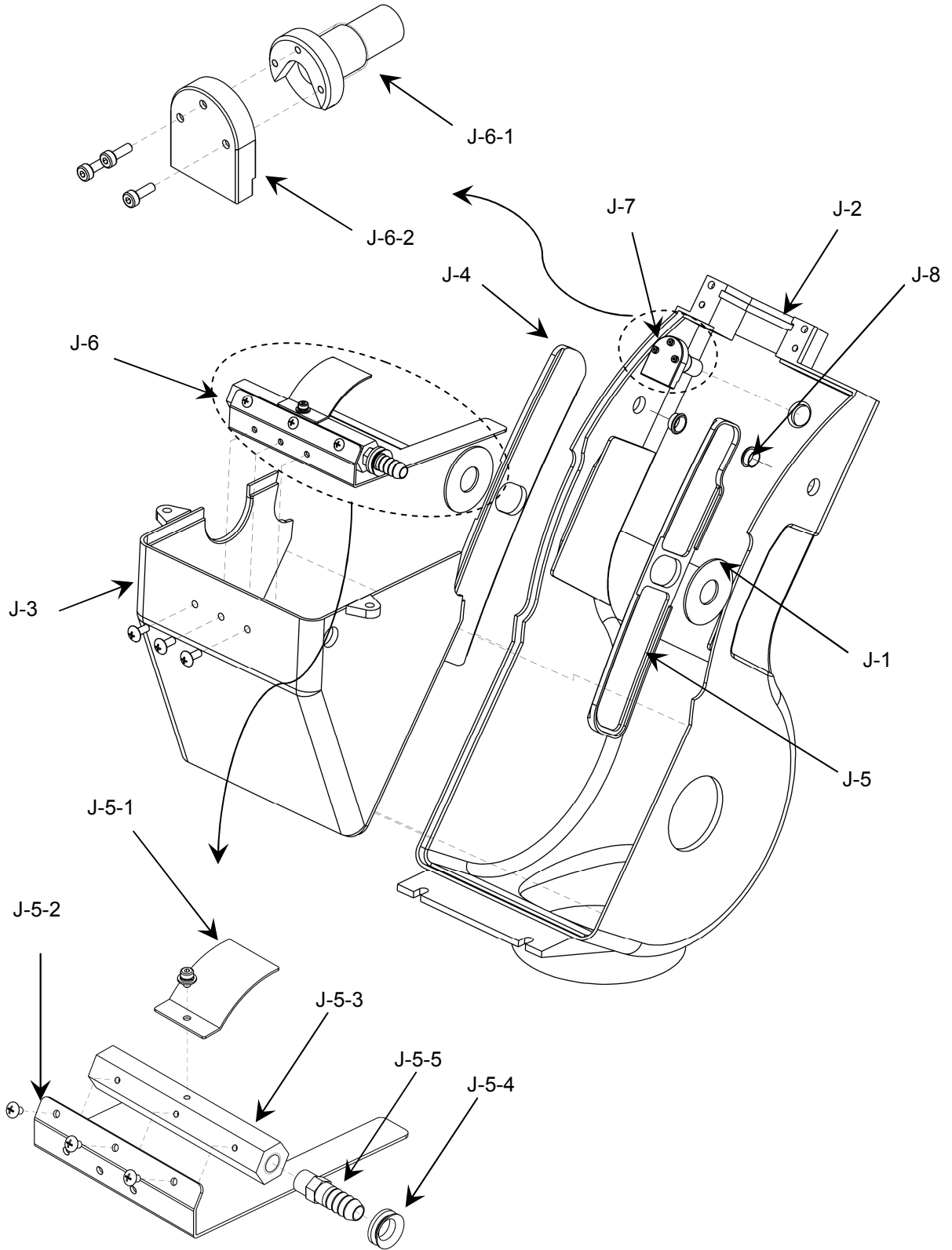


1.11 G4 EDGING ROOM TOP ASSY

No.	Part Name	Code	Description	Qty
I	G4 EDGING ROOM TOP ASSY	G4MASSY027-AB		-
I-1	G2 EDGING ROOM WINDOW GUIDE	1230A00G205-A		2
I-2	G3 WINDOW DUST PLATE	1250A00G304-B		1
I-3	G2 EDGING ROOM WINDOW BRUSH BRK	1310A00G208-B		1
I-4	ABS BONDING BLOCK	2000A00G004-A		2
I-5	G2 EDGING ROOM TOP	2000A00G201-C		1
I-6	G2 EDGING ROOM WINDOW	2010A00G201-B		1
I-7	EDGING ROOM SPONGE	3016A000223-A		1
I-8	G4 WINDOW MOTOR ASSY	G4MASSY052-AB		1
I-9	G4 EDGING ROOM LED ASSY	G4MASSY050-AC		1
I-10	G2 WINDOW GUIDE BRK	1310A000142-A		2
I-11	G4 WINDOW SEAL	2040A000112-A		1
I-12	G3 LIMIT SENSOR BRACKET	1210A000798-A		1
I-13	HARNESS(WINDOW SW1(EXT))	G4EHARS008-AA		1

No.	Part Name	Code	Description	Qty
I-8	G4 WINDOW MOTOR ASSY	G4MASSY052-AB		-
I-8-1	G2 WINDOW GEAR SHAFT	1210A00G218-B		1
I-8-2	G2 WINDOW GEAR	1230A00G206-B		2
I-8-3	G2 WINDOW MOTOR GEAR	1230A00G207-A		1
I-8-4	G2 WINDOW MOTOR BRK	1330MPOG210-B		1
I-8-5	BEARING (FL686C)	3002A000006-A		2
H-8-6	HARNESS(WINDOW DC MOTOR)	G4EHARS010-AA		1

[G4 EDGING ROOM BTM ASSY]

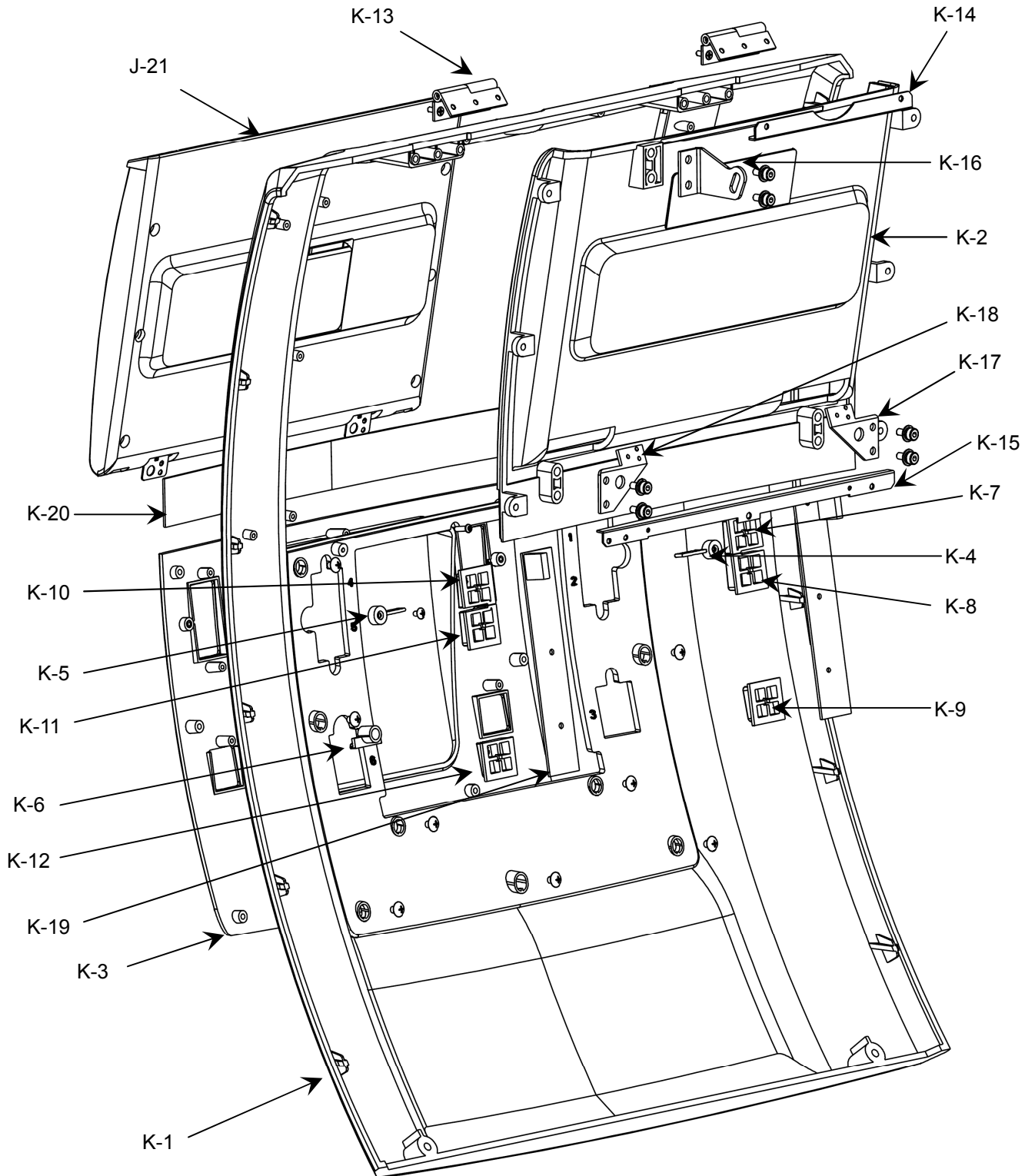


1.12 G4 EDGING ROOM BTM ASSY

No.	Part Name	Code	Description	Qty
J	G4 EDGING ROOM BTM ASSY	G4MASSY045-AA		
J-1	EDGING ROOM SHAFT BUSH	1230A00G006-B		2
J-2	G2 EDGING ROOM BOTTOM	2000A00G202-B		1
J-3	G2 EDGING ROOM MIDDLE	2000A00G203-A		1
J-4	EDGING ROOM SLIDER LEFT	2020A00G001-C		1
J-5	EDGING ROOM SLIDER RIGHT	2000A001223-A		1
J-6	G2 FRONT NOZZLE ASSY	G2MASSY821-AA		1
J-7	G2 BACK NOZZLE ASSY	G2MASSY822-AA		1
J-8	G4 FEELER CAP SPACER	1200A000299-A		2

No.	Part Name	Code	Description	Qty
J-5	G2 FRONT NOZZLE ASSY	G2MASSY821-AA		
J-5-1	NOZZLE TOP PLATE	1310A00G023-C		1
J-5-2	G2 FRONT NOZZLE BOT PLATE	1310A00G209-C		1
J-5-3	EDGING FRONT NOZZLE(M)	2020A00G005-A		1
J-5-4	V RING (10)	3004A000009-A		1
J-5-5	HOSE NIPPLE (1/8 *9.5)	3018A000006-A		1

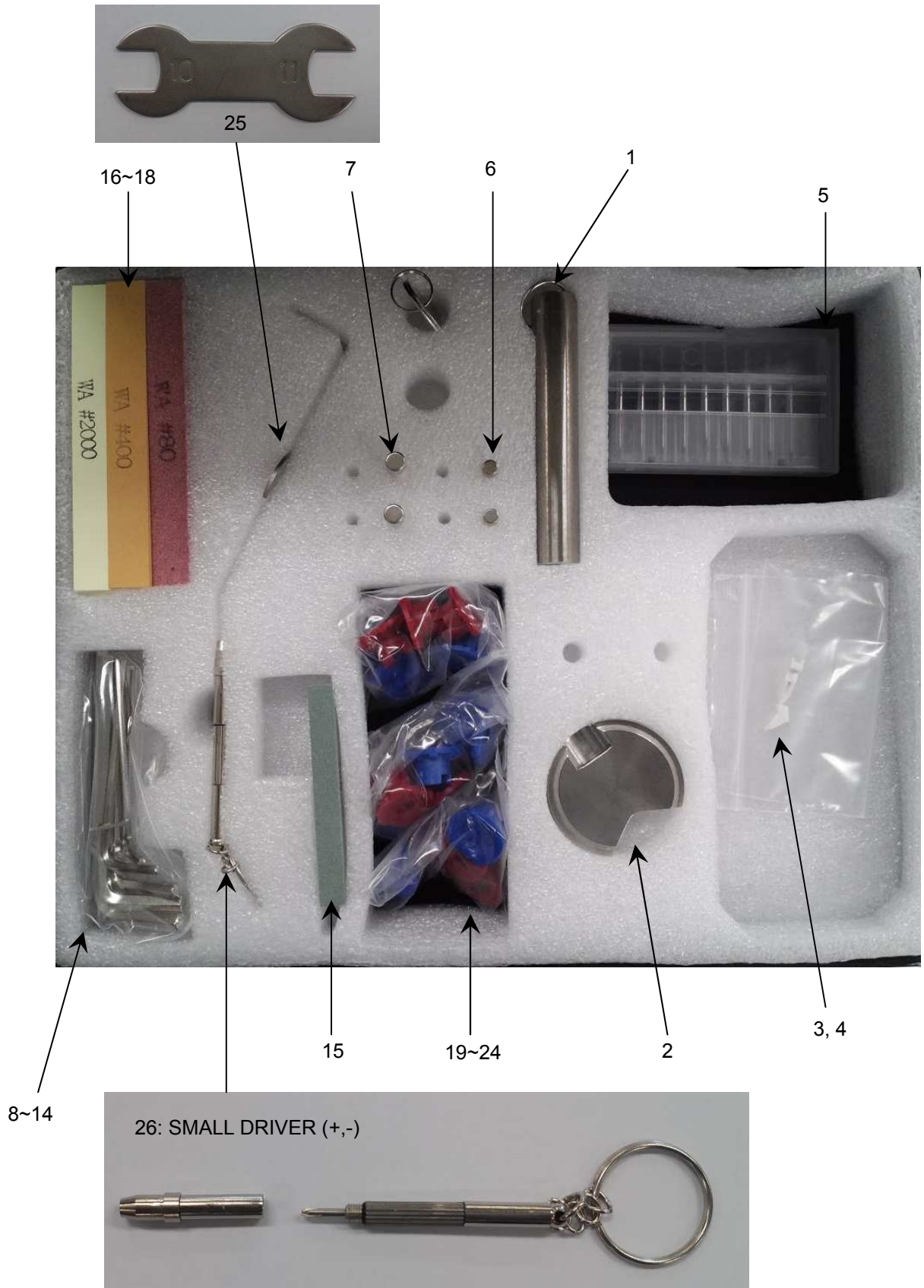
No.	Part Name	Code	Description	Qty
J-6	G2 BACK NOZZLE ASSY	G2MASSY822-AA		
J-6-1	G2 EDGING BACK NOZZLE	1200MP0G222-B		1
J-6-2	G2 EDGING BACK NOZZLE COVER	1310A00G210-E		1

[G4 COVER FRONT ASSY]

1.13 G4 COVER FRONT ASSY

No.	Part Name	Code	Description	Qty
K	G4 COVER FRONT ASSY	G4MASSY020-AB		
K-1	G4 COVER FRONT	2000A001218-A		1
K-2	G4 COVER FRONT BLACK	2000MS00091-A		1
K-3	G4 COVER FRONT DECO	2000MS00087-A		1
K-4	G4 COVER FRONT KEY DECO LEFT	2000MS00089-A		1
K-5	G4 COVER FRONT KEY DECO RIGHT	2000MS00099-A		1
K-6	G4 COVER FRONT LED	2010A000017-A		1
K-7	G4 COVER FRONT KEY 1	2000MS00093-A		1
K-8	G4 COVER FRONT KEY 2	2000MS00094-A		1
K-9	G4 COVER FRONT KEY 3	2000MS00095-A		1
K-10	G4 COVER FRONT KEY 4	2000MS00096-A		1
K-11	G4 COVER FRONT KEY 5	2000MS00097-A		1
K-12	G4 COVER FRONT KEY 6	2000MS00098-A		1
K-13	HINGE	3022A000004-A		2
K-14	G2 C F B FIX BRK 1	1330MP0G212-B		1
K-15	G4 C F B FIX BRK 2	1330MP00018-A		1
K-16	G2 STAY TOP	1330MP0G211-B		1
K-17	G2 LCD HINGE BRK LEFT	1330MP0G214-B		1
K-18	G2 LCD HINGE BRK RIGHT	1330MP0G215-B		1
K-19	G4 PCB ASSY(EBT-400)	G4EPCB0009-AA		1
K-20	G4 COVER DECO PLATE	1200MP01429-A		1
K-21	G4 LCD ASSY	G4MASSY021-AA		1

II. Accessories



Tool Box (for User)

No.	Part Name	Code	Description	Qty
O-1	BLOCK REMOVER	1210A00G057-A		1
O-2	MAIN CALIBRATION JIG	1210A00G061-B		1
O-3	G4 FEELER TIP SHORT	2090A000021-A		1
O-4	G4 FEELER TIP LONG	2090A000020-A		1
O-5	DRILL BIT	3099A000010-A	DRILL MODEL	9
O-6	FUSE, SCHURTER	7610S003127-A	220V MODEL	2
O-7	FUSE	7612S153260-A	110V MODEL	2
O-8	L WRENCH (1.5M/M)	9340A00LW15-A		1
O-9	L WRENCH (2.0M/M)	9340A00LW20-A		1
O-10	L WRENCH (2.5M/M)	9340A00LW25-A		1
O-11	L WRENCH (3.0M/M)	9340A00LW30-A		1
O-12	L WRENCH (4.0M/M)	9340A00LW40-A		1
O-13	L WRENCH (5.0M/M)	9340A00LW50-A		1
O-14	L WRENCH (6.0M/M)	9340A00LW60-A		1
O-15	DRESSING STICK 2	1250MZ0G015-B		1
O-16	DRESSING STICK (WA80)	3022A00G001-B		1
O-17	DRESSING STICK (WA400)	3022A00G002-B		1
O-18	DRESSING STICK (WA2000)	3022A00G003-B		1
O-19	SMALL LEAP BLOCK(BLUE)	2010A000004-A		3
O-20	SMALL LEAP BLOCK(RED)	2010A000005-A		3
O-21	SMALL LEAP BLOCK 2(BLUE)	2010A000006-A		5
O-22	SMALL LEAP BLOCK 2(RED)	2010A000007-A		5
O-23	SMALL LEAP BLOCK 3(BLUE)	2010A000008-A		5
O-24	SMALL LEAP BLOCK 3(RED)	2010A000009-A		5
O-25	G2 SPANNER 10-11	1310A00G307-A	For Drill bit replacement	1
O-26	SMALL DRIVER (+,-)	9940ALL0002-A	For feeler tip replacement	1